



Key Features C2-6104

- 4-window Processor
- 4 high quality CORIO®2 scaling engines.
- 4 DVI-I inputs
- 5th input (DVI-I) for background or cascading multiple-units
- 4x Internal Still Image Stores
- DVI-D I/O support to 1920x1200, 1080p@60Hz
- DVI-A I/O support to 2048x2048, 1080p@60Hz
- Analog supports RGBHV, RGBS, RGsB, YPbPr
- 10 user-definable presets
- Motion adaptive de-interlacing & noise reduction for YUV & YPbPr inputs
- Color borders and source labeling
- Zoom up to 10X with Full Positioning
- Image Shrink to 10% with Full Positioning
- Per-pixel or percentage scaling
- Autoset - Automatic analog picture sizing
- Chromakey, Luma-key, Genlock & Mix
- Front panel includes LCD, menu control and quick-setup features
- Control via RS-232/RS-422/RS-485, Ethernet or Front Panel
- CORIOtools Suite compatible
- Optional modules (e.g. for Tally I/O)
- 1RU rack-mount case

Based on TV One's exclusive CORIO®2 Technology the **CORIOview C2-6104** has five DVI-I inputs (including one for cascade or background usage) to place up to 4 sizeable windows on a single DVI-I output. Each window is powered by a CORIO®2 scaler providing full picture-in-picture flexibility. High-performance de-interlacing with motion-adaptive noise reduction provides input compatibility with YUV and YPbPr sources such as 525i, 625i, 720p, 1080i and 1080p. Custom resolutions can also be added quickly and easily using available software.

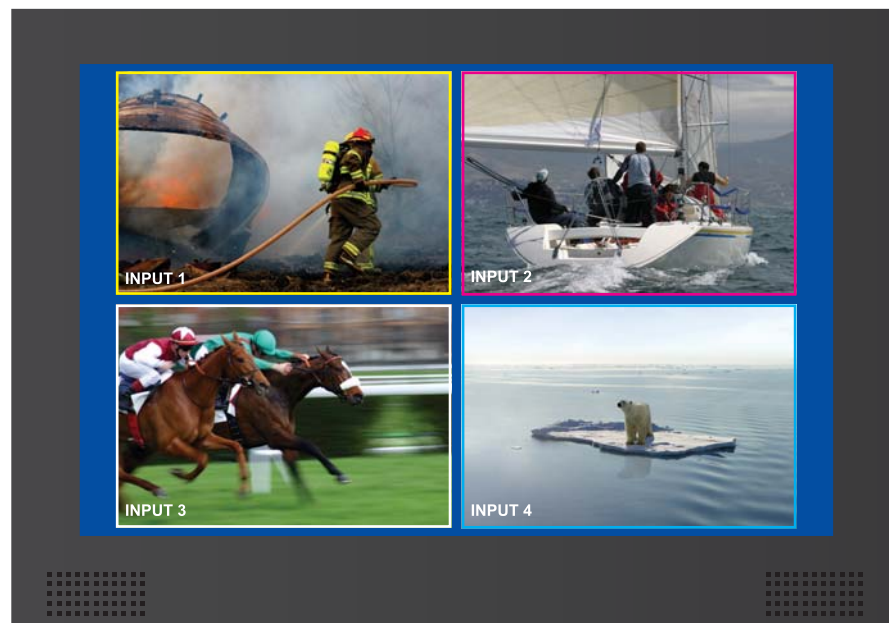
All settings are stored in a non-volatile memory and are retained even when power is switched off. A built-in LCD and menu system aids quick setup allowing functions to be controlled via the front panel Push Buttons, or alternatively via RS-232/ RS-422/RS-485 or Ethernet.

Variable Zoom to 10X allows you to enlarge any part of the graphic image to fill the entire computer screen and position controls allow you to move around to any area desired. Variable Shrink to as little as 10% allows fitting multiple images next to each other, with full positional controls.

Advanced Features include Genlock, Chromakey, Luma-key and Mixing. The Key Mode allows any window to be keyed over any other with variable priority / layer control. The keyed image may be faded in and out. Due to the 4:4:4 sampling format, precise keying at the pixel level can be achieved.

CORIOtools Suite integration

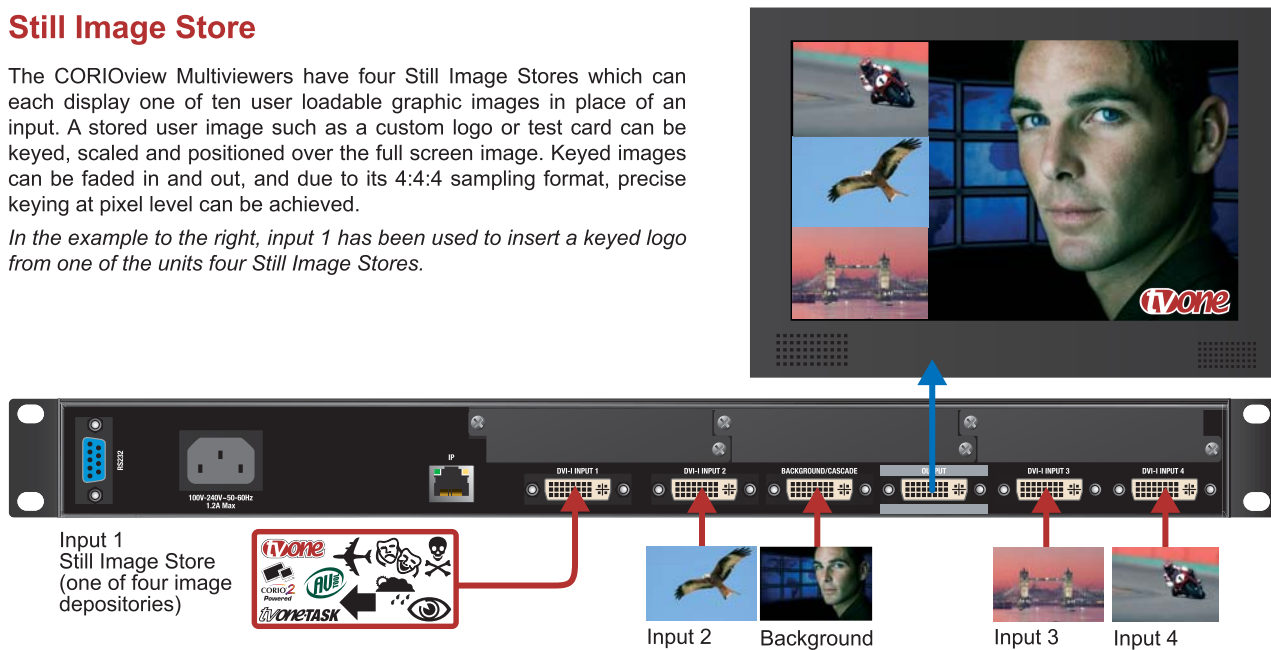
The CORIOtools Suite integrates fully with both the CORIOview C2-6204 and C2-6104. Amongst its many useful applications is the ability to visually label each input. This allows the operator to keep track of which window relates to which input - particularly useful when cascading units.



Still Image Store

The CORIOview Multiviewers have four Still Image Stores which can each display one of ten user loadable graphic images in place of an input. A stored user image such as a custom logo or test card can be keyed, scaled and positioned over the full screen image. Keyed images can be faded in and out, and due to its 4:4:4 sampling format, precise keying at pixel level can be achieved.

In the example to the right, input 1 has been used to insert a keyed logo from one of the units four Still Image Stores.



C2-6104
WFX 2009
Best Video
Processor
Award

C2-6104 Specifications

Inputs

Signal Type 5x DVI-I via DVI-I Connector

Digital DVI-D Format:

Max HD Resolution 1080p@60Hz

Max PC Resolution 1920x1200@60Hz

Analog DVI-A Format:

Max HDTV Resolution 1080p@60Hz

Max PC Resolution 2048x2048

Max Horiz Scan Rate 150KHz

Signal Format RGBHV, RGBS, RGsB, YPbPr

Sync TTL Level, 10KΩ, Pos or Neg

Termination 75Ω

R-G-B Level Range 0.5-2.0 Vp-p

Scan Rate Detection Automatic

Output

Signal Type 1x DVI-I via DVI-I Connector

Digital DVI-D Format:

Max HD Resolution 1080p@60Hz

Max PC Resolution 1920x1200@60Hz

Analog DVI-A Format:

Max HDTV Resolution 1080p@60Hz

Max PC Resolution 2048x2048

Vertical Refresh Rate Any to 250Hz

Signal Format RGBHV, RGBS, RGsB, YPbPr

R-G-B Level 0.7 Vp-p

General

Size and Position Automatic via AutoSet or Manual

Image Size User-Definable Presets

Image Freeze One Video Frame

Settings Memory Non-Volatile

Zoom Range Variable to 10X Zoom

Shrink Range Variable to 10%

Image Mirroring Horizontal and/or Vertical

Horizontal Filtering Full Digital

YPbPr de-interlacing Motion adaptive + noise reduction

Film Mode (525i/1080i) 3:2 Pull Down Detection

Conversion Technology Proprietary – CORIO®2

Frame Rate Conversion Frame add/drop

Color Resolution 24-bit (16.8 Million Colors)
Sampling Rate 162MHz
Digital Sampling 24-bit, 4:4:4 format
Firmware Memory Flash, Upgradeable via RS-232
Analog Video Adjust R-G-B Levels Contrast, Phase

Control Methods

Local via Front Panel Buttons & LCD
RS-232/RS-485/RS-422 via D9 Female Connector
Ethernet (TCP/IP) RJ45

Warranty

Limited Warranty 2 Years Parts and Labor

Regulatory Compliance

Main Units FCC, CE, RoHS
Power Supply UL, CUL, CE, PSE, GS, RoHS

Mechanical

Desktop Case (HWD) 44x420x200mm (1.75"x17"x7.9")
With Rack Ears (HWD) 44x482x200mm (1.75"x19"x7.9")
Weight (Net) TBA

Environmental

Operating Temperature 0° to +50° C (+32° to +122° F)
Operating Humidity 10% to 85%, Non-condensing
Storage Temperature -10° to +70° C (+14° to +158° F)
Storage Humidity 10% to 85%, Non-condensing

Power Requirement

Internal Power Supply 100-240VAC, 50-60Hz, 50W

Accessories Included

1x AC Power Cord
2x VGA to DVI Adapters
1x Operations Manual
1x Rack mount Kit
1x Control Software
2 Ears and 4 Screws
Downloadable from website

Product Item Numbers

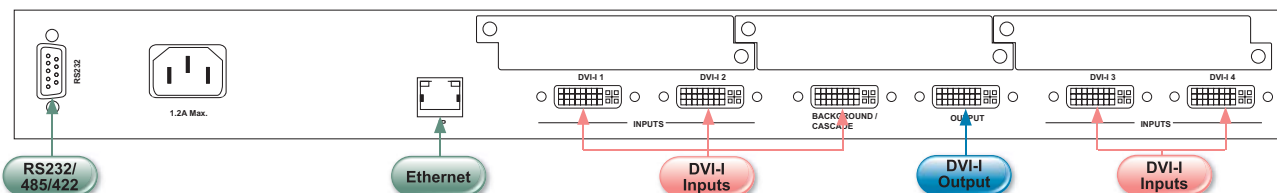
CORIOview C2-6104 DVI-I Multiviewer

Optional Accessories

RM110 Rear rack rail supports for 24" to 32" deep racks
ZDH-2038 DVI-I Male to 5-BNC Female
ZDH-2040 DVI-I Male to VGA Female
C2M-TALLY Tally module
C2M-CLOCK Clock module



C2-6104



CORIOview C2-6204

4 Window 3G-SDI Multiviewer



Key Features C2-6204

- 4-window Processor
- 4 high quality CORIO®2 scaling engines.
- 4 3G-SDI inputs with re-clocked loop through
- 5th input (DVI-I) for background or cascading multiple-units
- 4x Internal Still Image Stores
- DVI-D I/O support to 1920x1200, 1080p@60Hz
- DVI-A I/O support to 2048x2048, 1080p@60Hz
- SDI Output support, SD/HD/3G
- Analog supports RGBHV, RGBS, RGsB, YPbPr
- 10 user-definable presets
- Motion adaptive de-interlacing & noise reduction for YUV & YPbPr inputs
- Color borders and source labeling
- Zoom up to 10X with Full Positioning
- Image Shrink to 10% with Full Positioning
- Per-pixel or percentage scaling
- Autoset - Automatic analog picture sizing
- Chromakey, Lumakey, Genlock & Mix
- Front panel includes LCD, menu control and quick-setup features
- Control via RS-232/RS-422/RS-485, Ethernet or Front Panel
- CORIOtools Suite compatible
- Optional modules (e.g. for Tally I/O)
- 1RU rack-mount case

CORIOview C2-6204 4-Window 3G SDI Processor is based on TV One's exclusive CORIO®2 technology and has four 3G SDI inputs plus a DVI-I input (for cascade or background use) to place up to 4 sizeable windows on a single DVI-I / 3G SDI output. Each window is powered by a CORIO®2 scaler providing full PIP flexibility.

3G SDI resolutions up to 1080P/60 are supported. High performance de-interlacing with motion-adaptive noise reduction are available for interlaced sources. The unit provides a DVI-I output as well as a duplicate 3G SDI capable output.

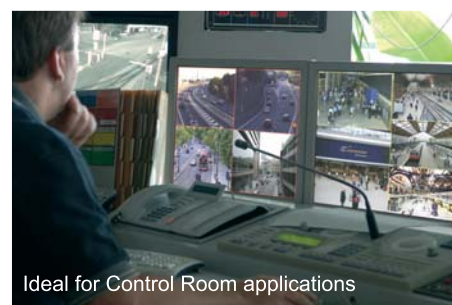
All settings are stored in a non-volatile memory and are retained even when power is switched off. A built-in LCD and menu system aids quick setup allowing functions to be controlled via the front panel Push Buttons, or alternatively via RS-232/ RS-422/RS-485 or Ethernet.

Variable Zoom to 10X allows you to enlarge any part of the graphic image to fill the entire computer screen and position controls allow you to move around to any area desired. Variable Shrink to as little as 10% allows fitting multiple images next to each other, with full positional controls.

Advanced Features include Genlock, Chromakey, Lumakey and Mixing. The Key Mode allows any window to be keyed over any other with variable priority / layer control. The keyed image may be faded in and out. Due to the 4:4:4 sampling format, precise keying at the pixel level can be achieved.

User-defineable Presets

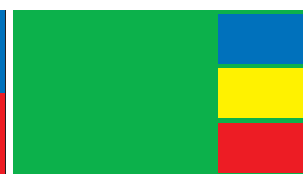
Ten user defined presets (controllable directly from the front panel or external communications) are available to customize settings for various applications. The 4 scaleable windows can be positioned and layered anywhere on the output monitor. Colored borders and source labelling are also provided for each window. Four Still Image Stores are built into the unit which can each display one of ten user loadable graphic images to be used in place of an input. The fifth input can be used for a background color, unscaled video or for cascading.



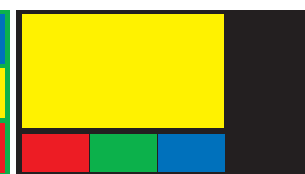
Preset Examples



1 - 4 Windows



2 - 4 Windows (3 as PIPs)



3 - 4 Windows + background



4 - 4 Windows + background



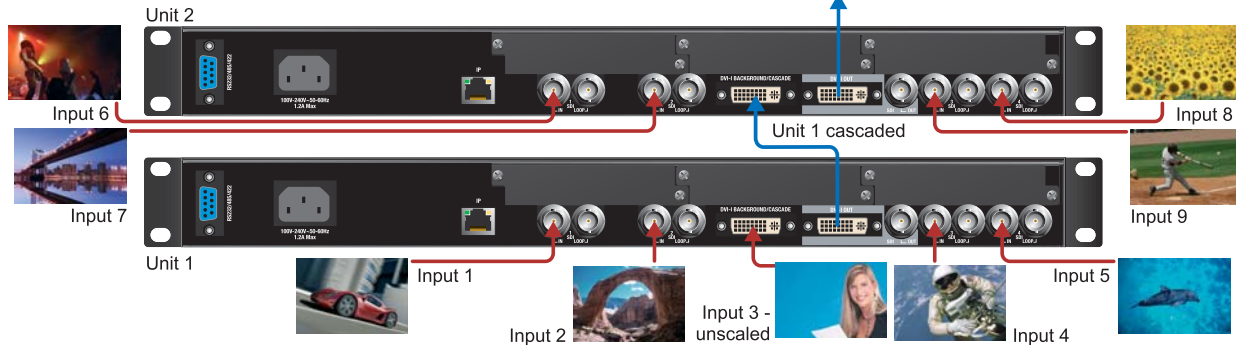
5 - 3 Windows + 1 stored user image (ie keyed logo) + background



Cascading 2 or more units

Several CORIOview Multiviewer units can be cascaded together to expand the number of images displayed. This example shows the combination of two units to provide eight scaled and positioned images from eight separate sources over an unscaled background.

In cascading the output from Unit 1 is fed into the Background/ cascade input of Unit 2



C2-6204 Specifications

Inputs

Signal Type

4x 3G SDI via BNC Connector
1 x DVI-I via DVI Connector (5th input)

SDI Format:

3G, HD, SD SDI SMPTE 259M, SMPTE 392M, SMPTE 425M with re-clocked loop through

Digital DVI-D Format:

Max HD Resolution 1080p@60Hz
Max PC Resolution 1920x1200@60Hz

Analog DVI-A Format:

Max HDTV Resolution 1080p@60Hz
Max PC Resolution 2048x2048
Max Horiz Scan Rate 150KHz
Signal Format RGBHV, RGBS, RGsB, YPbPr
Sync TTL Level, 10KΩ, Pos or Neg
Termination 75Ω
R-G-B Level Range 0.5-2.0 Vp-p
Scan Rate Detection Automatic

Output

Signal Type

1x DVI-I via DVI-I Connector
1 x 3G SDI via BNC Connector

SDI Format:

3G, HD, SD SDI SMPTE 259M, SMPTE 392M, SMPTE 425M

Digital DVI-D Format:

Max HD Resolution 1080p@60Hz
Max PC Resolution 1920x1200@60Hz

Analog DVI-A Format:

Max HDTV Resolution 1080p@60Hz
Max PC Resolution 2048x2048
Vertical Refresh Rate Any to 250Hz
Signal Format RGBHV, RGBS, RGsB, YPbPr
R-G-B Level 0.7 Vp-p

General

Size and Position Automatic via AutoSet or Manual
Image Size User-Definable Presets
Image Freeze One Video Frame
Settings Memory Non-Volatile
Zoom Range Variable to 10X Zoom
Shrink Range Variable to 10%
Image Mirroring Horizontal and/or Vertical
Horizontal Filtering Full Digital

YPbPr de-interlacing

Film Mode (525i/1080i)

Conversion Technology

Proprietary – CORIO®2

Frame Rate Conversion

Frame add/drop

Color Resolution

24-bit (16.8 Million Colors)

Sampling Rate

162MHz

Digital Sampling

24-bit, 4:4:4 format

Firmware Memory

Flash, Upgradeable via RS-232

Analog Video Adjust

R-G-B Levels Contrast, Phase

Control Methods

Local via Front Panel Buttons & LCD

RS-232/RS-485/RS-422 via D9 Female Connector

Ethernet (TCP/IP) RJ45

Warranty

Limited Warranty

2 Years Parts and Labor

Regulatory Compliance

Main Units FCC, CE, RoHS

Power Supply UL, CUL, CE, PSE, GS, RoHS

Mechanical

Desktop Case (HWD) 44x420x200mm (1.75"x17"x7.9")

With Rack Ears (HWD) 44x482x200mm (1.75"x19"x7.9")

Weight (Net) TBA

Environmental

Operating Temperature 0° to +50° C (+32° to +122° F)

Operating Humidity 10% to 85%, Non-condensing

Storage Temperature -10° to +70° C (+14° to +158° F)

Storage Humidity 10% to 85%, Non-condensing

Power Requirement

Internal Power Supply 100-240VAC, 50-60Hz, 50W

Accessories Included

1x AC Power Cord 6' (2m) US, UK or Euro

2x VGA to DVI Adapters TBC

1x Operations Manual

1x Rack mount Kit 2 Ears and 4 Screws

1x Control Software Downloadable from website

Product Item Numbers

CORIOview C2-6204 3G SDI Multiviewer

Optional Accessories

ZDH-2038 DVI-I Male to 5-BNC Female

ZDH-2040 DVI-I Male to VGA Female

C2M-TALLY Tally module

C2M-CLOCK Clock module

