

visual engineering
LIGHTWARE

**MX 8x8 DVI Pro
User's Manual**



SAFETY INSTRUCTIONS

Class I apparatus construction. This equipment must be used with a main power system with a protective earth connection. The third (earth) pin is a safety feature, do not bypass or disable it.

This equipment should be operated only from the power source indicated on the product.

To disconnect the equipment safely from power, remove the power cord from the rear of the equipment, or from the power source. The MAINS plug is used as the disconnect device, the disconnect device shall remain readily operable.

There are no user-serviceable parts inside of the unit. Removal of the top cover will expose dangerous voltages. To avoid personal injury, do not remove the top cover. Do not operate the unit without the cover installed.

The apparatus shall not be exposed to dripping or splashing and that no objects filled with liquids, such as vases, shall be placed on the apparatus.

The apparatus must be safely connected to multimedia systems. Follow instructions described in this manual.

Replacing the AC fuse

Unplug the AC power cord from the equipment

Locate the AC fuse on the rear of the unit (page 8)

Replace only the AC fuse as indicated on the rear panel of the unit: 3.15A fast blowing

Connect the power cord to the switcher and to the AC power source. Make sure the switcher is working properly.

WEEE (Waste Electrical & Electronic Equipment)

Correct Disposal of This Product



This marking shown on the product or its literature, indicates that it should not be disposed with other household wastes at the end of its working life. To prevent possible harm to the environment or human health from uncontrolled waste disposal, please separate this from other types of wastes and recycle it responsibly to promote the sustainable reuse of material resources.

Household users should contact either the retailer where they purchased this product, or their local government office, for details of where and how they can take this item for environmentally safe recycling.

Business users should contact their supplier and check the terms and conditions of the purchase contract. This product should not be mixed with other commercial wastes for disposal.



DECLARATION OF CONFORMITY

We,

Lightware Kft. 1071 Budapest Peterdy str. 15 HUNGARY

as manufacturer declare, that the product

MX 8x8 DVI Pro
(Computer Matrix Switcher)

in accordance with the EMC Directive 89/336/EEC and the Low Voltage Directive 73/23/EEC amended by the CE-marking Directive 93/68/EEC are in conformity with the following standards:

EMI/EMC EN 55103-1 E3, EN 55103-2

Safety EN 60065 Class I

Date: 11th January 2007

Name: Gergely Vida (Managing Director)

Signed: 

Table of contents

	Page
1. General description	6
Features	7
Front Panel view	8
Rear Panel view	9
EDID MANAGEMENT	13
2. Operation	14
FRONT PANEL OPERATIONS	14
3. RS 232 / 422 control	19
4. Software control - Lightware Matrix Controller	26
4.1 Installing Matrix Controller.....	26
4.2 Using Lightware Matrix Controller	28
4.3 EDID Management: using EDID Router	33
4.4 ERROR Messages	43
5. Firmware upgrade	44
6. Specifications	46
7. Quality Check Record	50
8. Warranty	51

1. General description

Lightware MX 8x8 DVI Pro is a DVI single link matrix switcher with 8 DVI inputs and 8 DVI outputs, that routes any input (s) to any combination of output(s). The router conforms to DVI 1.0 specification, and switches signals between 25 - 165 MHz pixel clock frequency: from 640x480@60Hz to 1920x1200@60Hz or 2048x1080@60Hz PC resolutions, including HDTV resolutions as well. Each input signal is equalized for distances of 50 meter high quality 24AWG cable and each output is reclocked for jitter free signal transmission.

The switcher has an RS 232 (or RS422 optional) and an RJ45 LAN port for remote control applications and a control panel for local control operation. Front panel buttons are illuminated and easy field relegendable with text for informative system integration.

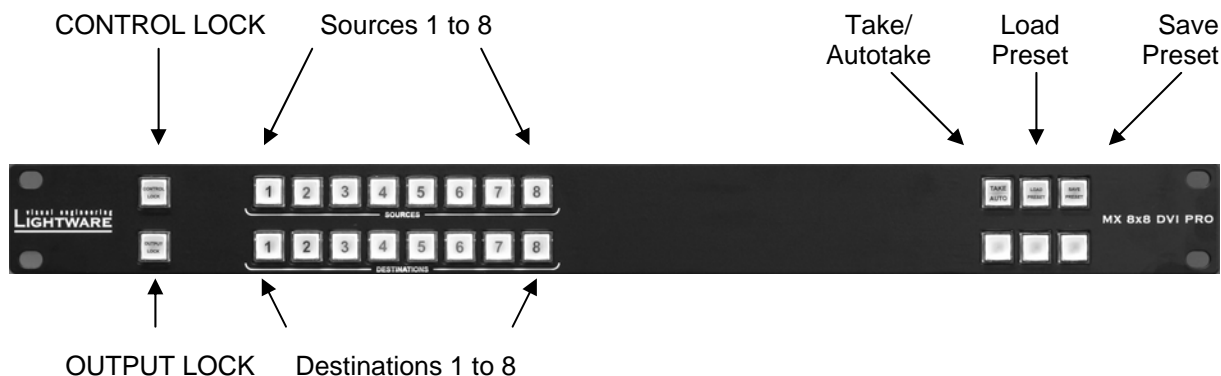
Box contents

- Routing switcher
- User's manual
- IEC power cable
- RS 232 9 pole D-sub Male to Female cable
- CD-ROM with control software
- Cross Link UTP patch cable

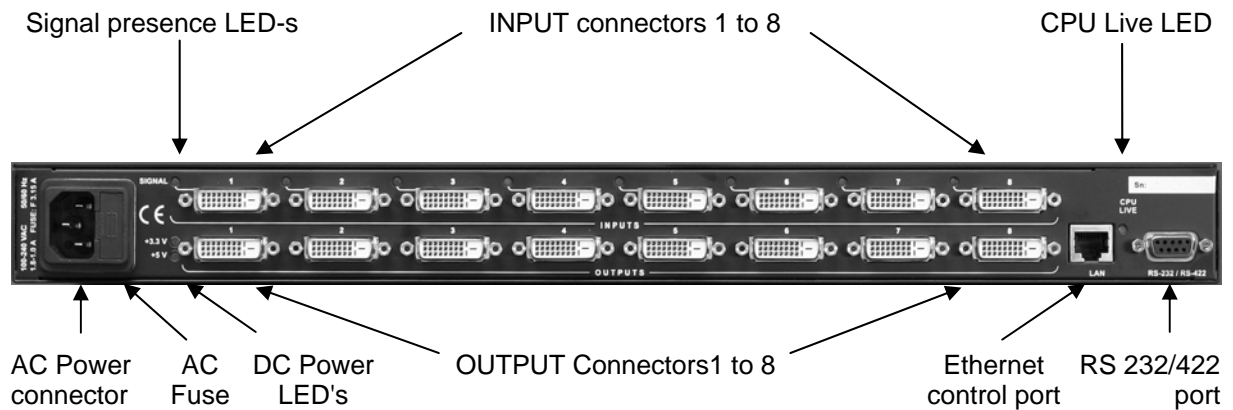
Features

- **50 meter input cable compensation** – Using 24AWG high quality DVI cable, the MX 8x8 DVI Pro automatically compensates up to 50 meter cable length, which extends installation possibilities even on highest HDTV or computer resolutions. In case of lower pixel resolutions, this length can be even higher.
- **EDID routing** – Advanced EDID management with EDID emulation. The user can emulate any EDID on the switcher's inputs independently, read out and store any attached monitor's EDID in 100 internal memory locations, upload and download EDID files using Remote Control Software.
- **8 Inputs, 8 Outputs non-blocking cross point matrix architecture** – The router allows any input to be switched to any output or more outputs simultaneously.
- **Single link, max 1.65 Gb/s DVI-D transmission (1920x1200 or 2048x1080)** – The MX 8x8 DVI Pro routes any DVI single link signal between 25 and 165 MHz pixel clock frequency conforming to DVI 1.0 standard.
- **Supports all HDTV resolutions** – 720p, 1080i and 1080p etc. without HDCP encoding - Unencrypted HDTV signals up to 165 MHz pixel clock frequency regardless of resolution are passed through MX 8x8 DVI Pro
- **Signal Detect LED-s at each input connector** – Active DVI signals are detected: clock channel activity is green indicated, when signal is applied to the input.
- **Output PLL reclocking** – (removes jitter caused by long cables) each output has a clean, jitter free signal, eliminating signal instability and distortion caused by long cables or connector reflections.
- **Front panel buttons control** – 8 source select, 8 destination select, Take, Load preset, Save preset, Panel Lock, Output Lock
- **Relegendable buttons** – Each button has an easy removable flat cap and a translucent label which can be inserted under it to identify sources and destinations.
- **RS 232 or RS422 control** – Simple ASCII based RS232 protocol is used for switching, preset calling, status request, etc.
- **Ethernet control** – TCP/IP Ethernet 10Base-T or 100Base TX (Auto-Sensing)
- **Fiber cable support** – Self powered DVI fiber cables using +5V from DVI sources (VGA cards, etc.) usually are consuming more than 50 mA, which load is maximum allowed by DVI 1.0 standard. MX 8x8 DVI Pro supports +5V 500 mA constant current output on each DVI output to power long distance fiber optical cables.
- **Universal power supply** – MX 8x8 DVI Pro accepts AC voltages from 100 to 240 Volts with 50 or 60 Hz line frequency on standard IEC connector.
- **Power failure memory** – In case of power failure the unit stores its latest configuration, and after next power up it loads automatically.

Front Panel view



- Control Lock** Disables or enables front panel operation. When red illuminated, operations on front panel are prohibited.
- Output Lock** Locks and protects one (or more) outputs. Inhibits accidental input changing on protected output.
- Sources** Source buttons have three functions: to select an input, to select a preset and to view the selected input's state (take mode).
- Destinations** Destination buttons have two functions: to select an output, or to view the selected output's state.
- Take/Autotake** This button has two functions: displays the actual switching mode of the router or executes switching on TAKE mode.
- Load Preset** Loads and executes a previously saved preset from one of the preset memories.
- Save Preset** Stores actual matrix state, in one of preset memories.

Rear Panel view**Input connectors**

24 pole DVI-D digital-only female receptacle connectors. Connect DVI source devices to these connectors.

Input signal LED-s

Indicates input signal presence (TMDS clock channel active) on associated input connector: Green lighting when signal is present.

CPU LIVE

Continuously blinking LED if the CPU works properly

AC Power

Standard IEC power connector. The router works with 90 to 264 Volts, 50 or 60 Hz power sources.

AC Fuse

Replace with F 3.15 A type only.

DC Power LED's

Indicators for presence of internal DC power voltages: +3.3 Volts and + 5 Volts. Green lighting when power voltages are present.

Ethernet port

RJ 45 connector. Remote control port for connecting the unit to Local Area Network.

RS 232/422 connector

9 pole Dsub female connector for remote control applications. Can be ordered with RS232 or RS422 control.

Output connectors

24 pole DVI-D digital-only female receptacle connectors. Connect DVI monitors or other displays to these connectors.

DVI inputs

MX 8x8 DVI Pro provides 24 pole „digital only” DVI-D connectors for input connections. Always use high quality DVI cable for connecting sources and displays.

Each input has a built in signal detection circuit with an LED located next to the input connector. The LED lights green, if the associated connector has an active DVI clock signal applied.

Pin	Signal	Pin	Signal	Pin	Signal
1	TMDS Data2-	9	TMDS Data1-	17	TMDS Data0-
2	TMDS Data2+	10	TMDS Data1+	18	TMDS Data0+
3	TMDS Data2 Shield	11	TMDS Data1 Shield	19	TMDS Data0 Shield
4	nc	12	nc	20	nc
5	nc	13	nc	21	nc
6	DDC Clock	14	+5V Power	22	TMDS Clock Shield
7	DDC Data	15	GND (for +5V)	23	TMDS Clock+
8	nc	16	Hot Plug Detect	24	TMDS Clock-

Table1. - DVI-D "digital only" connector Single Link pin assignments

Cable length at inputs

MX 8x8 DVI Pro has an advanced built in cable compensation circuit, which automatically provides cable length compensation. This circuit extends the maximum usable cable length to even 60 meter using high quality 22AWG copper cable on WUXGA 1920x1200 graphics resolution.

Cabel type Signal	22 AWG	24 AWG
	Reference type DVI GEAR: SHR DVI	Reference type TASKER: TSK 1060
Resolution	Max length (meter)	Max length (meter)
1920x1200; 1600x1200; 2048x1080p; 1080p	60 m	50 m
1680x1050; 1400x1050; 1280x1024	75 m	62 m
1024x768; 1365x768; 720p; 1080i;	92 m	77 m
800x600	100 m	84 m
640x480; 480p; 576p	120 m	100 m

Table2. - Maximum DVI cable lengths at inputs

DVI outputs

MX 8x8 DVI Pro provides 24 pole "digital only" DVI-D connectors for output connections. As standard DVI outputs, there can be used limited length cables, since there is no output amplification applied. For using longer cable runs at outputs, use fiber optical DVI cables or active DVI repeaters/extenders.

Output reclocking

MX 8x8 DVI Pro reclocks the signal on all outputs. Signal reclocking is an essential important procedure in digital signal transmission. After passing the reclocking circuit, the signal becomes stable and jitter free, and can be transmitted over more equipment like processors, or event controllers. Without reclocking there can be seen sparkles, noise and jaggies on the image.

Fiber Cable powering

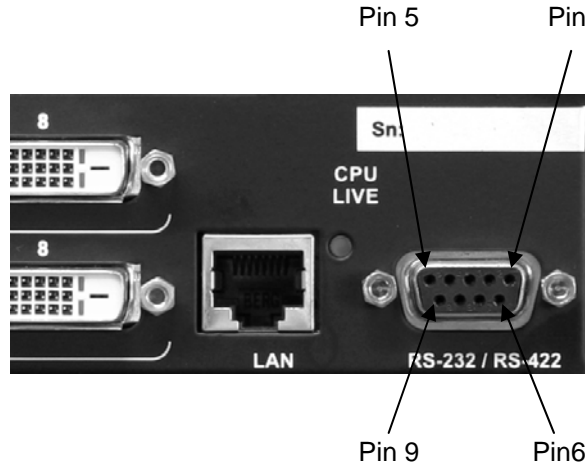
As special feature MX 8x8 DVI Pro on DDC +5V output (pin 14 on output connectors) is able to supply 500 mA current to power fiber optical DVI cables. Standard DVI outputs or VGA cards supply only 55 mA current on +5V output, thus unable to power directly a fiber optical cable.

Info

MX 8x8 DVI Pro does not check if the connected sink (monitor, projector or other equipment) supports Hotplug or EDID signals but outputs the selected signal immediately after switch command.

RS 232/422 control port

Lightware MX 8x8 DVI Pro can be remote controlled through industry standard 9 pole sub-D female connector located on the rear panel of the unit. The router can be ordered with RS232 or RS422 control port.



RS 232 port pin locations

Pin nr.	RS 232	RS 422
1	NC non connected	TX- data transmit complement
2	TX data transmit	TX+ data transmit true
3	RX data receive	RX+ data receive true
4	DTR internally connected to Pin 6	RX- data receive complement
5	GND signal ground (shield)	GND signal ground (shield)
6	DSR internally connected to Pin 4	NC non connected
7	RTS internally connected to Pin 8	NC non connected
8	CTS internally connected to Pin 7	NC non connected
9	NC non connected	NC non connected

Table3. - RS232 and RS422 pin connections

EDID Management

MX 8x8 DVI Pro provides an EDID Management feature with advanced functions that helps system integration. The built in EDID Router stores and emulates 100 EDID data plus all monitor's EDID that are connected to the output connectors. First 50 EDID are factory presets, while memories 50 to 99 are user programmable.

On all inputs there can be emulated different or same EDID, that are copied from EDID router's memory, or the attached monitor. For example, the router can be set up to emulate any device, that is connected to one of the inputs, and the EDID is automatically changed, if the monitor is replaced with an other.

EDID is independently programmable for all inputs without affecting each other. All input has it's own EDID circuit.

User must not disconnect DVI cables during change an EDID opposite to other manufacturer's products.

EDID Router can be controlled with included Matrix Control Software via RS232 port or Ethernet .

2. Operation

POWER

Connect the power cord to the router's IEC standard power input connector. MX 8x8 DVI RPO is immediately powered on when the power cord is connected to the AC source. The router does not have a power switch, it remains powered on, until AC line voltage is present.

After powered on, the unit performs a self test, all front panel buttons light up for one second. After the self test the router reloads its last configuration and it is ready for use.

Info

At switching on, the router reloads the latest settings which were used before was turning off. MX 8x8 DV Pro has an internal emergency memory which stores all current settings, and ties configurations. This memory is independent from presets and invisible for the user. This built-in feature helps the system to be ready immediately in case of power failure or accidentally powering down.

FRONT PANEL OPERATIONS

TAKE / AUTOTAKE modes

The router has two different switching modes: TAKE and AUTOTAKE. If the TAKE button is unlit, TAKE mode is active. When the TAKE button is continuously lighting green, AUTOTAKE mode is selected.

Press and hold the TAKE button for two seconds to change between TAKE and AUTOTAKE modes.

TAKE mode allows the user to make multiple connections and deselections at once. This mode is useful when time delay is not allowed between multiple switchings.

AUTOTAKE mode is useful when immediate actions must be done or fast switching is needed between sources on a destination.

CONTROL LOCK

Front panel button operations can be enabled or disabled using CONTROL LOCK button, while RS232/422 control is still enabled. If it unlit, front panel button operations are enabled. If there is a continuous red lighting, front panel operations are inhibited.

Press and release CONTROL LOCK button to toggle the control lock state.

SWITCHING

Creating a connection or multiple connections in TAKE mode

1. First press and release the selected source button. The pressed source button and all destination buttons which are currently connected to this source will light up. The dark remaining destination buttons are not connected to this source. This is an informative display about current status of the selected input. (view only)
2. Press and release the selected destination button or buttons which has to be connected to the selected source. The preselected destination button(s) start blinking.
3. Press and release TAKE button to execute the tie or ties. Now the selected input is switched to the selected output or to the multiple outputs.

Deselecting or muting in TAKE mode

1. First press and release the selected source button. The pressed source button and all destination buttons which are currently connected to this source will light up. The dark remaining destination buttons are not connected to this source. This is an informative display about current status of the selected input. (view only)
2. Press and release the selected, green lighting destination button which has to be disconnected from the selected source. The pressed destination or multiple destinations will turn dark.
3. Press and release TAKE button to execute disconnection.

Info Deselected destinations are disconnected from any source, thus output devices will display black image or "no signal" message, or automatically will turn off.

Info Multiple switching and deselecting actions can be done simultaneously, during only one TAKE action.

Creating a connection in AUTOTAKE mode

1. Press and release the selected destination button. The pressed destination button, and the actually connected source button are lighting green. If no source is connected (the output is muted) no source button will light.
2. Press and release the selected input button. The switch action will be executed immediately. Switching between sources to the selected destination can be done directly.

Deselecting or muting in AUTOTAKE mode

1. Press and release the selected destination button. The pressed destination button, and the actually connected source button are lighting green. If no source is connected (the output is muted) no source button will light.

2. Press and release the active green lighting source button. The output is muted.

Info

Deselected destinations are disconnected from any source, thus output devices will display black image or "no signal" message or automatically will turn off.

SAVE or LOAD PRESETS

MX 8x8 DVI Pro has 8 user programmable presets. Each preset stores a configuration regarding all input connections for all outputs. All presets are stored in a non volatile memory, the router keeps presets even in case of power down. Memory numbers are assigned to source buttons 1 to 8

Saving a Preset in TAKE mode

1. Press and release SAVE PRESET button.
2. Press and release the desired source (memory address) button (source 1 to 8)
3. Press and release TAKE button. Now the current configuration is stored in selected memory.

Info

Preset save action always stores the current configuration for all outputs

Loading a Preset in TAKE mode

1. Press and release LOAD PRESET button.
2. Press and release the desired source (memory address) button (source 1 to 8)
3. Press and release TAKE button. Now the selected preset is loaded.

Info

Loading a preset always modifies all output states.

Saving a Preset in AUTOTAKE mode

1. Press and release SAVE PRESET button.
2. Press and release the desired source (memory address) button (source 1 to 8). Now the current configuration is stored in the selected memory.

Info

Preset save action always stores the current configuration for all outputs .

Loading a Preset in AUTOTAKE mode

1. Press and release LOAD PRESET button.
2. Press and release the desired source (memory address) button (source 1 to 8). Now the selected preset is loaded.

Info *Loading a preset always modifies all output states.*

VIEW current state

User can check the current switching status on the front panel using front panel buttons. View mode is slightly different in TAKE or AUTOTAKE modes because of different switching philosophy of the two modes.

Info *View mode does not mean, that the router has to be switched in different mode, viewing and switching can be done after each other, without pressing any special button.*

View current state in TAKE mode

If the router is in TAKE mode, user can verify both input and output connections. In TAKE mode no accidental change can be done unless TAKE button is pressed.

Press and release a source button. Now the selected source button and all destination buttons will light up which are currently connected to the selected source. This informative display will remain for 5 seconds, then turns all buttons unlit.

If all source and destination and TAKE buttons are unlit (the unit is in TAKE mode, and no input was selected in last 5 seconds), press and release a destination button to see its current state. Now the source button which is connected to the selected destination will light up. If no source button is lighting, the selected destination is in muted state. Pressing another destination button, there can be seen the last pressed state of destination.

View current state in AUTOTAKE mode

In AUTOTAKE mode only states of destination can be viewed.

Press and release the required destination button. Now the source button which is connected to the selected destination will light up. If no source button is lighting, the selected destination is in muted state. Pressing another destination button, there can be seen the last pressed current state of destination.

OUTPUT LOCK

Using MX 8x8 DVI Pro there is a possibility to lock a destination. This feature prevents an accidental switching to the locked destination in case of important signal. Locking a destination means, that no input configuration can be changed or deselected on that particular destination.

Destinations can be independently locked or unlocked. Locking a destination does not affect other destinations.

Output Lock in TAKE mode

1. Press and release the required destination button. Now the selected destination button and the currently configured source button will light up (view mode)
2. Press and release the Output Lock button. Now the Output Lock button will light up in red colour.
3. Press and release TAKE button. The desired destination now is locked.

Unlock in TAKE mode

1. Press and release the required destination button which was previously locked. Now the selected destination button and the currently configured source button and the Output Lock button will light up.
2. Press and release the Output Lock button (deselect). Now the Output Lock button will turn off, however the locking function has not been unlocked yet.
3. Press and release TAKE button. The desired destination now is unlocked.

Output Lock in AUTOTAKE mode

1. Press and release the required destination button. Now the selected destination button and the currently configured source button will light up (view mode)
2. Press and release the Output Lock button. Now the Output Lock button will light up in red colour, and lock function is activated. No source can be changed at the locked destination.

Unlock in AUTOTAKE mode

1. Press and release the required destination button which was previously locked. Now the selected destination button and the currently configured source button and the Output Lock button will light up
2. Press and release the Output Lock button (deselect). Now the Output Lock button will turn off, and the locking function has been unlocked.

3. RS 232 / 422 and Ethernet control

RS232 / RS422 ports

M8x8DVI-Pro can be ordered with either RS232 or RS422 communication port. The port settings are done in the factory. D-sub connector pin assignments can be found on chapter 1.

Changing and viewing protocols

M8x8DVI-Pro is equipped with multiple router protocols.

1. Switch the router in TAKE mode if used previously in AUTOTAKE mode by pressing TAKE button for 2 seconds. (TAKE will not light continuously)
2. Press and release Control Lock (Control Lock button lights in red colour continuously)
3. Press and keep pressed Output Lock button. Now one of the source buttons will light up (view protocol)
If Source#1 button lights: Lightware protocol is active
If Source#2 button lights: Protocol#2 is active
4. During Output Lock pressed, press the desired Source button, accordingly to the new protocol. The desired Source button starts blinking, the router performs a reset and all buttons light up for 4 seconds. Now the new protocol is active.

Port settings:

The device uses standard RS-232 interface with the following settings:

9600 Baud

8 data bit

1 stop bit

no parity

null modem cable

The matrices accept commands surrounded by curly brackets - { } - and responds surrounded by round brackets - () - only if a command was successfully executed. Input, output numbers and values must be sent as two digit ASCII numbers.

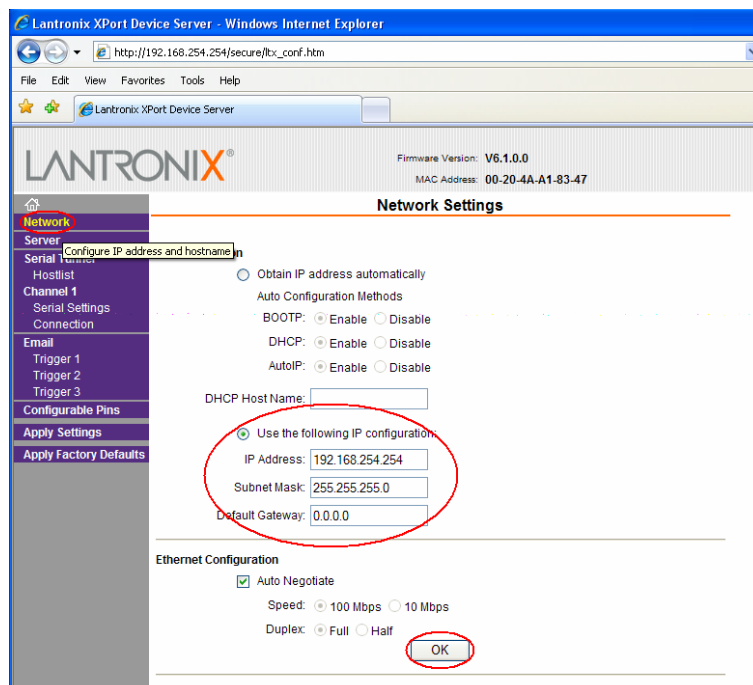
Ethernet setup

The matrix switchers can be controlled via ethernet identically the same way as via serial port. The same commands can be issued on the ethernet as on the serial port. The Ethernet settings can be accessed through Ethernet connection only.

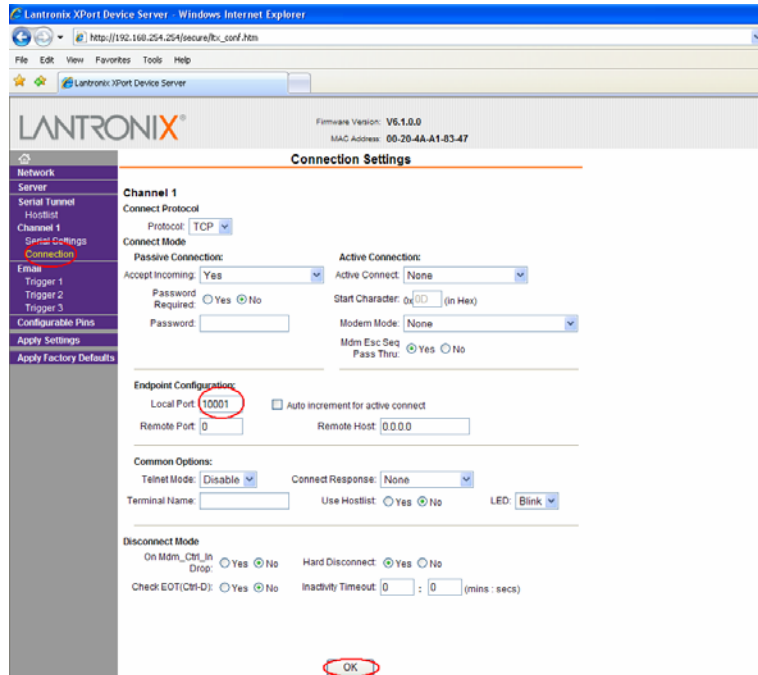
Enter current IP address into the address line of your browser (eg. Internet Explorer, etc) and press OK to proceed. **The default IP is 192.168.254.254**



Select "Use the following IP configuration". Enter your settings (the default is shown), then press OK to proceed.

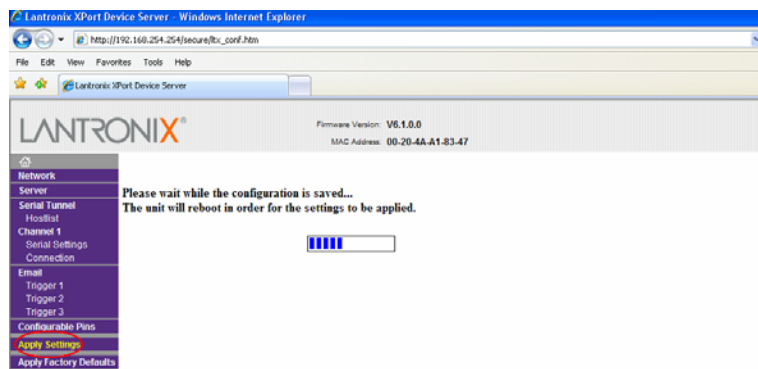


You can access the router on port:10001 by default, but you can modify this number to any port except the followings:



Restricted port numbers:	1-1024, 9999, 14000-14009, 30704, 30718
---------------------------------	--

Info: Remember that the matrix control software uses 10001 port only for ethernet communication.



To finalize your settings press “Apply Settings”

Lightware matrix controller application

Launch the Lightware Matrix Controller software application, it will automatically find all routers on the same subnet, and enumerates it under “Comm port” menu

Control commands:

Legend : xx* = input number in 2 digit ASCII format (01,05,07 etc.)
 yy* = output number in 2 digit ASCII format
 CrLf = Carriage return, Line feed (0x0D,0x0A)
 = space character (0x20)

1. Switch one input to one output (Audio / DVI / RGB / SDI / Video)

Command	{xx@yy}	{01@05}
Response	(Oyy lxx)CrLf	(O05 l01)CrLf

Description: Switch input xx to output yy.

Example: Connect input 1 to output 5.

2. Switch one input to all outputs (Audio / DVI / RGB / SDI / Video)

Command	{xx@O}	{01@O}
Response	(lxx All)CrLf	(l01 All)CrLf

Description: Switch input xx to all outputs.

Example: Switch input 1 to all outputs.

3. View connection on the specified output (Audio / DVI / RGB / SDI / Video)

Command	{?yy}	{?05}
Response	(Oyy lxx)CrLf	(O05 l01)CrLf

Description: View connection on output yy.

Example: View connection on output 5.

4. View connection on all outputs (Audio / DVI / RGB / SDI / Video)

Command	{VC}
Response	(ALL O1 O2 O3 O4 O5 O6 O7 O8)CrLf

Description: Response length depends on the number of outputs installed in the router. The response above suppose a router having 8 outputs. Indexes show the actual output and the number at the given index shows which input it is connected to. If value O5 equals O4 it means that output 5 is connected to input 4.

O1..O8 are two digit ascii characters. (01, 02, 04, etc.)

Example: View connection on all outputs

Command	{VC}
Response	(ALL 01 02 03 04 05 06 07 08)CrLf

Legend: output 1 is connected to input 1, output 2 is connected to input 2...output8 is connected to input 8, this is the so called „diagonal pattern”.

5. View mutes on all outputs(Audio / DVI / RGB / SDI / Video)

Command	{VM}
Response	(MUT M1 M2 M3 M4 M5 M6 M7 M8)CrLf

Description: The length of the response depends on the number of outputs installed in the router. The response above suppose a router having 8 outputs. Indexes show the actual output and the number at the given index shows its state. If the value M5 equals 1 it means that output 5 is in mute, if 0 output 5 is not muted.

Example:

Command	{VM}
Response	(MUT 1 0 0 1 0 0 0 0)CrLf

Legend: Current router has 8 outputs. Output 1 and 4 are muted while the other outputs are unmuted.

6. Mute specified output (Audio / DVI / RGB / SDI / Video)

Command	{#yy}	{#05}
Response	(MUTyy)CrLf	(MUT05)CrLf

Description:Mute output yy.

Example:Mute output 5.

7. Unmute specified output (Audio / DVI / RGB / SDI / Video)

Command	{+yy}	{+05}
Response	(UMTyy)CrLf	(UMT05)CrLf

Description: Unmute output yy.

Example: Unmute output 5. Output 5 is now switched to the output it was connected prior to mute command.

8. Save preset to the specified memory position (Audio / DVI / RGB / SDI / Video)

Command	{\$zz}	{\$07}
Response	(SPRzz)CrLf	(SPR07)CrLf

Description:Save current ties to preset zz.

Example:Save current connections to preset memory 7.

9. Load preset from the specified position (Audio / DVI / RGB / SDI / Video)

Command	{%zz}	{%07}
Response	(LPRzz)CrLf	(LPR07)CrLf

Description: Load current ties to preset zz.

Example: Load connections previously saved to preset memory 7. All connections will be reloaded.

10. View product type (Audio / DVI / RGB / SDI / Video)

Command {I} - capital i
 Response (PRODUCT_TYPE)CrLf

Description: DEVICE_NAME format:

	<i>Number of inputs</i>		<i>Number of Outputs</i>	<i>Device type</i>
MX		X		A,DVI,RGB,SDI,V

Example:

Command {I}
 Response (MX8X8DVI)CrLf
 The connected router has 8 inputs, 8 outputs and it is a DVI router.

11. View serial number (Audio / DVI / RGB / SDI / Video)

Command {S}
 Response (SERIAL_NUMBER)CrLf

Description: SERIAL_NUMBER format:

	<i>8 -1byte long- ASCII numbers</i>
SN:	xxxxxxxx

Example:

Command {S}
 Response (SN:06050100)CrLf

The connected serial number of the router is: 06050100.

12. View Firmware version (Audio / DVI / RGB / SDI / Video)

Command {F}
 Response (FIRMWARE_VERSION)CrLf

Example:

Command {F}
 Response (FW:1.11)CrLf

The connected router has a firmware version of 1.11.

13. Error responses (Audio / DVI / RGB / SDI / Video)

Invalid input number

Response (ERR01)CrLf

Description: Given input number exceeds the installed number of inputs or equals zero.

Invalid output number

Response (ERR02)CrLf

Description: Given output number exceeds the installed number of outputs or equals zero.

Invalid value

Response (ERR03)CrLf

Description: Given value exceeds the maximum allowed value to be sent.

Invalid preset number

Response (ERR04)CrLf

Description: Given preset number exceeds the maximum allowed preset number.
The maximum preset number is limited to 32 for all matrices.

4. Software control - Lightware Matrix Controller

The unit can be controlled using Lightware Matrix Controller from a PC computer or Laptop through RS 232 or Ethernet port.

4.1 INSTALLING MATRIX CONTROLLER

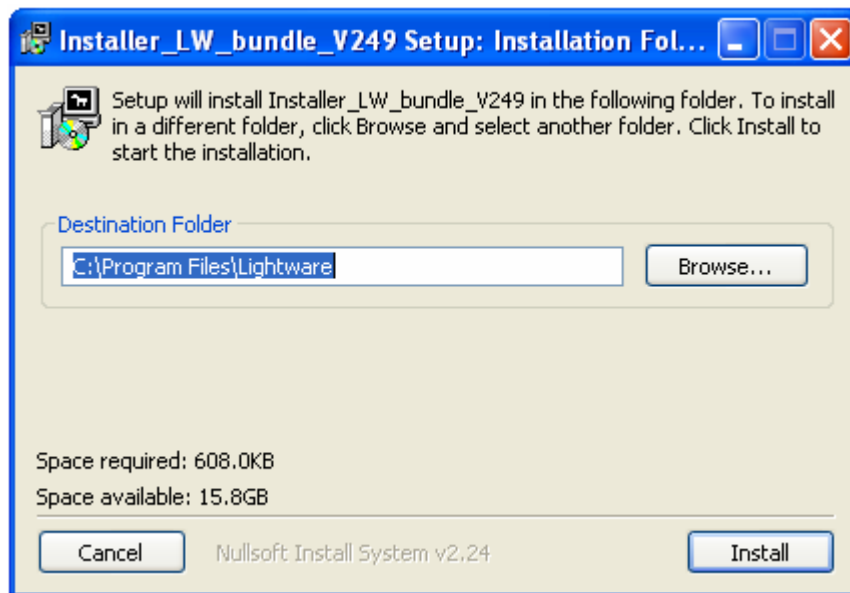
Info **Windows firewall should be switched off to enable the IP search feature!**

Info *If older version of control software is installed please uninstall it before installing a newer version (see section 7.)*

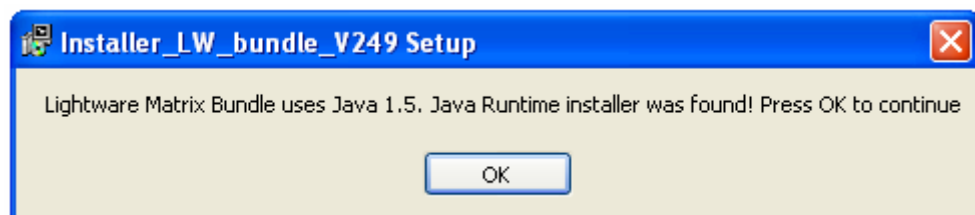
Info *The control software requires Java runtime environment v1.5 or higher. This can be found in the supplied CD's Java Installer directory, or downloaded from Sun's website:*

http://dlc.sun.com/jdk/jre-1_5_0_01-windows-i586-p.exe

1. Run Installer_LW_bundle_v x.xx.exe
(x.xx refers to actual revision - currently v 2.49)

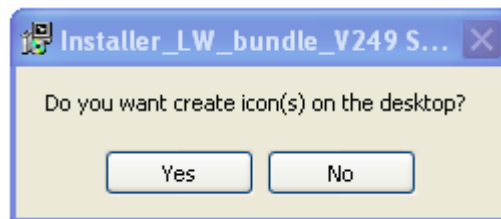


2. Select destination folder and click Install (Using the default path is highly recommended)
3. If Java is already installed the following pop-up window will appear:

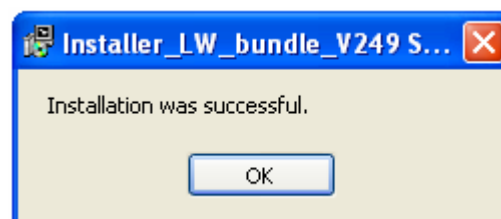


4. Click OK button.

5. If you want to create desktop icon click Yes in the next pop-up window:



6. After finishing the installation of Lightware Matrix Controller the following message appears:



7. To run Lightware matrix control software find and click from **Start** menu->Programs->Lightware->**LW_matrix_controller_vXXX.jar** or from the desktop ikon (if this option was selected) via shortcut:



8. To uninstall the control software double click on: **Start** menu ->Programs->Lightware-> **Uninstall_LW_matrix_controller_vXXX.exe**

4.2 Using Lightware Matrix Controller

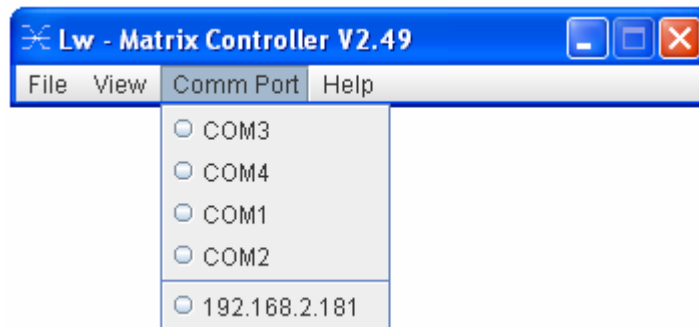
The unit can be controlled using Lightware Matrix Controller software from a PC computer or Laptop through RS 232 connection or Ethernet port.

1. Connection between the Matrix switcher and the computer can be made via
 - serial port, with standard RS232 Male to Female cable
 - Ethernet (with a HUB or to a simple endpoint)
 - Ethernet directly (with cross UTP cable)
2. Starting the application



To run the CONTROL SOFTWARE double click on **LW_matrix_controller_vXXX** icon on the desktop or select from *Startmenu->Programs->Lightware-> LW_matrix_controller_vXXX.jar*

3. Select communication interface according to your actual connection:



RS232 If the connection has been made via serial port, select the appropriate communication port from Comm Port drop-down menu.

IP If the connection has been made via ethernet select the desired IP address from Comm Port drop-down menu. No IP addresses will be shown if no Lightware LAN enabled matrix switcher is connected to the same network as the PC.

4. When the Lightware Matrix Controller finds the hardware, it defines the product type, and a button matrix area appears according to the input and output numbers of the router. I1; I2; I3...columns are representing the inputs, the O1; O2; O3...rows the outputs. Each red bulb represents a valid connection.

Info After starting the Lightware Matrix Controller, it automatically searches for Lightware devices connected to the LAN. If finds one picks its IP address and puts into the Comm Port menu. If there are no matrix switchers connected to the PC only comm ports will be shown in this menu.

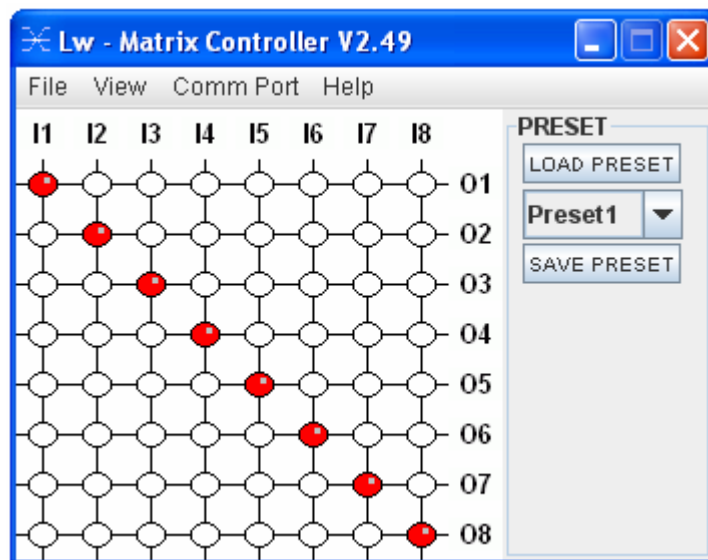
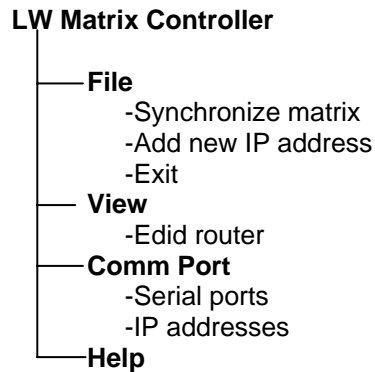
Info **Windows firewall should be switched off to enable the IP search feature!**

Info Only one user is allowed to connect to the matrix switcher via ethernet.

Info After a successful connection has been established to a matrix switcher there is no difference in control via serial port and ethernet.

MENU Description

Matrix Controller contains following menus and submenus:



File menu

File menu contains 3 items:

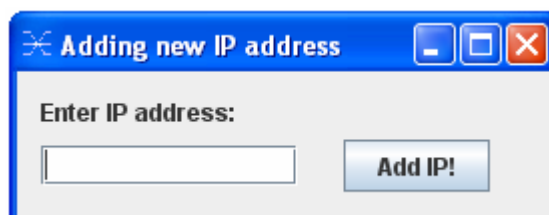
Synchronize matrix

Selecting Synchronize matrix will re-read connection information from the router and refresh the display.

Add new IP address

Selecting Add new IP address will display a new window where the user can add IP addresses of routers that are not in the same subnet.

Write a valid IP address and click Add IP!



Exit

Exit will terminate the application.

View menu

View menu contains 1 item:

Edid router window

This item is gray and can not be selected if the connected MS does not have EDID ROUTER installed. For more information see Section: EDID operation

Comm Port menu

Comm Port menu contains 2 sections:

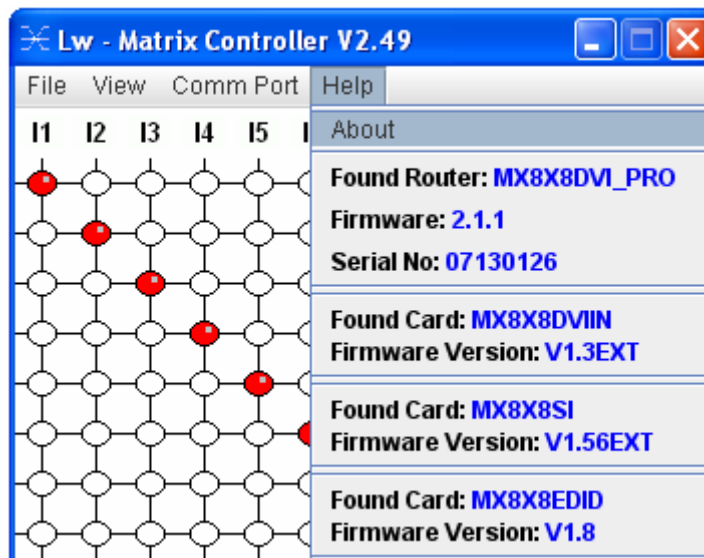
Serial ports available on the current PC

IP addresses found on the network

The IP addresses displayed in this window are those Lightware products, that are connected to the network. More than one units can be connected to one Local Area Network

HELP menu

After a successful connection to a Lightware router all identifying information is shown under the Help menu.



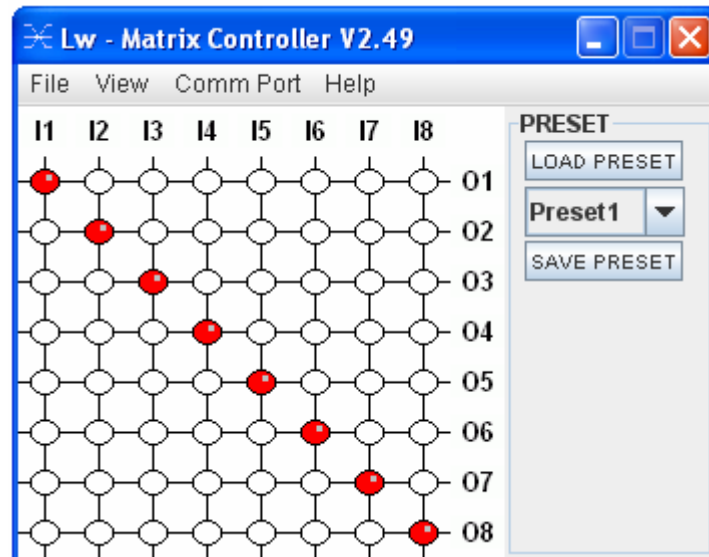
The connected matrix router's name (MX8x8DVI_PRO), installed firmware revision (2.1.1) and serial number (format: year and week of production, and the serial number, which is also found at back of the unit) can be seen in the first section. The following sections contain information about the installed cards.

I/O switching

I1; I2; I3...columns are representing the inputs, the O1; O2; O3...rows the outputs.

Each red bulb represents a live connection.

For making a connection click on the desired empty bulb.



PRESET operations

Preset operations can be done via the right panel named PRESET. Each Lightware matrix switcher has 32 preset memories, that can be loaded and saved any time.

Front panel Preset operations effect only the first 8 preset memories, all others from 9 to 32 are available only via Matrix Controller software.

Info

A Preset setting stores a full configuration of all outputs, that effects all outputs, when loading a Preset.

SAVE PRESET

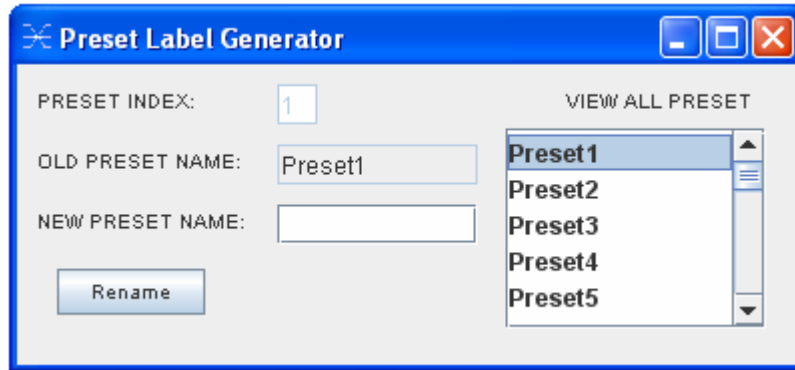
1. Make the desired configuration on matrix switching area.
2. Select the preset memory (Preset1...Preset32) where you want to save your current configuration
3. Press SAVE PRESET button. Now the preset is stored.

LOAD PRESET

1. Select the preset memory (Preset1...Preset32) you want to load as next configuration
2. Press LOAD PRESET button. Now the preset is loaded
3. On the matrix switching area there is displayed the new I/O configuration

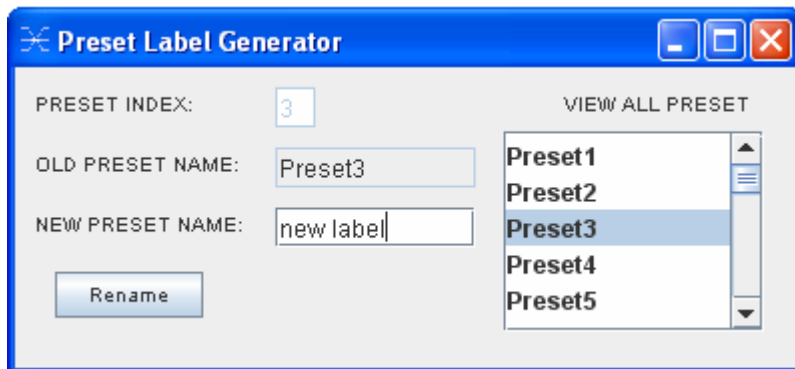
RENAME a preset:

Each preset has its own label (by default: Preset1..Preset32) which can be renamed. To modify these labels right-click on the preset list. The following window appears:



Example:

Select Preset3 and type the new preset name "*new label*", and click rename. The new name appears in the list. Close this window.



4.3 EDID Management: using EDID Router

Each DVI sink (eg. monitors, projectors, plasma displays, switcher inputs) must support the EDID data structure. Source BIOS and operating systems are likely to query the sink using DDC2B protocol to determine what pixel formats and interface is supported. DVI standard makes use of EDID data structure for the identification of the monitor type and capabilities. Most DVI sources (VGA cards, set top boxes, etc) will output DVI signal after accepting the connected sink's EDID information. In case of EDID readout failure or missing EDID the source will not output DVI video signal.

Why is EDID management necessary?

All DVI sources must read attached sink's EDID data (switcher input, monitor input, etc.) before starting the DVI signal transmission. If no EDID is available, most sources will not output the signal. Unlike in standard analog VGA graphics cards, DVI graphics cards do not allow to be forced from Windows desktop/properties/settings tab to different pixel resolutions. Only those resolutions and refresh rates are allowed, which are defined in EDID data.

To provide proper EDID data for DVI sources MX 8x8 DVI PRO has an advanced built in EDID router, that can manage the emulated EDID on it's all inputs independently. EDID can be managed using Lightware Matrix Controller software from a PC computer or Laptop through RS232 connection or Ethernet port. Emulating the right EDID information helps the user and installation engineer to control overall system's signal properties

EDID emulating options are:

- 1 emulating an EDID from factory preset memory (50 EDID) – static EDID emulation
- 2 emulating an EDID from user preset memory (50 memory locations) – static EDID emulation
- 3 copying and emulating EDID from one of attached display devices - dynamic EDID emulation

With EDID Router function the user is able to store EDID from any attached monitor to one of the user programmable memories, to download EDID from file to user memory, and to upload EDID from the router to file.

Info User must not disconnect DVI cables to change an EDID opposite to other manufacturer's products. EDID can be changed even if source is connected to the input and powered ON .

Info When EDID has been changed, the router toggles the HOTPLUG signal for 200 msec. Some graphic cards or DVD players do not sense the hotplug signal, and there can be happen, that even if EDID has been changed, the new set resolution is not affected. This case the source device must be restarted, or powered OFF and ON again.

About EDID router

EDID router contains a 116 block non volatile memory bank. EDID List is structured as follows:

- 1..50Factory Preset EDID list
- 51..100User programmable memories
- 101..108 (DVI_OUT_1...8)Attached monitor's EDID list
- 109..116 (DVI_IN_1...8).....emulated EDID at input conectors

Info *The first 50 EDID (1...50 inclusive) are factory preprogrammed and cannot be modified. These are the most commonly used resolutions.*

Info *The attached monitor's EDID is stored automatically, until a new monitor is attached to that particular output. In case of powering the unit off, the last attached monitor's EDID remains in non volatile memory.*

MEMORY	Resolution		MEMORY	Resolution
01	640x480@60 Hz		26	1600x1200@60 Hz
02	640x480@75 Hz		27	1920x1200@60 Hz
03	848x480@60 Hz 16:9		28	480i@59.94 Hz
04	800x600@50 Hz		29	640x480@59.94 Hz
05	800x600@60 Hz		30	720x480p@60 Hz
06	800x600@75 Hz		31	576i@50 Hz
07	1024x768@50 Hz		32	720x576p@50 Hz
08	1024x768@60 Hz		33	1280x720p@50 Hz
09	1024x768@75 Hz		34	1280x720p@60 Hz
10	1152x864@75 Hz		35	1920x1080i1 @50 Hz
11	1280x768@50 Hz		36	1920x1080i2 @50 Hz
12	1280x768@60 Hz		37	1920x1080i@60 Hz
13	1280x768@75 Hz		38	1920x1080p@24 Hz
14	1360x768@60 Hz		39	1920x1080p@25 Hz
15	1364x768@50 Hz		40	1920x1080p@30 Hz
16	1364x768@60 Hz		41	1920x1080p1 @50 Hz
17	1364x768@75 Hz		42	1920x1080p2 @50 Hz
18	1280x1024@50 Hz		43	1920x1080p@60 Hz
19	1280x1024@60 Hz		44	2048x1080p1 @50 Hz
20	1280x1024@75 Hz		45	2048x1080p2 @50 Hz
21	1366x1024@60 Hz		46	2048x1080p@60 Hz
22	1400x1050@50 Hz		47	
23	1400x1050@60 Hz		48	
24	1400x1050@75 Hz		49	
25	1600x1200@50 Hz		50	

Table4. -Factory Preset EDID list

EDID Router operation

Connecting to the MATRIX SWITCHER

1. Install CONTROL SOFTWARE. (See Section Software Installation)
2. Connect the Matrix switcher to the pc via Serial Port, or Ethernet (with a HUB or to a simple endpoint) or with Ethernet directly (with X cable)
3. Open the CONTROL SOFTWARE from Start Menu->Lightware->LW_MATRIX_CONTROLLER_Vxxx, where xxx means the latest software revision.

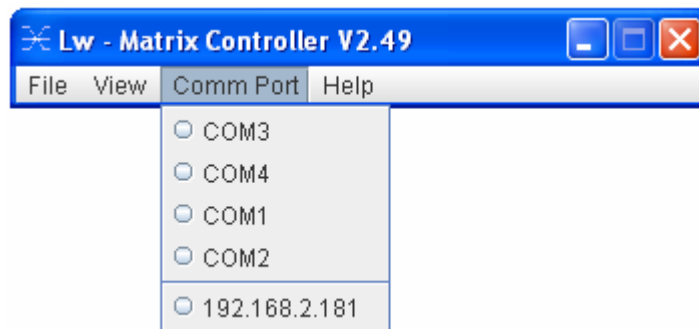
Info

The actual revision of the CONTROL SOFTWARE is 2.51

2. Select communication interface:

If you connect via serial port select the appropriate port from drop-down menu under Comm Port, and click on it.

If you want to connect via ethernet then you can also find IP address(es) in this drop-down menu. No IP addresses will be shown if no Lightware LAN enabled matrix switcher is connected to the same network as the PC.



Info

After starting the CONTROL SOFTWARE, it automatically searches for matrix switchers on the LAN. If finds one, it's IP address will be displayed in the Comm Port menu. If there are no matrix switchers connected to the PC only comm ports will be shown in this menu.

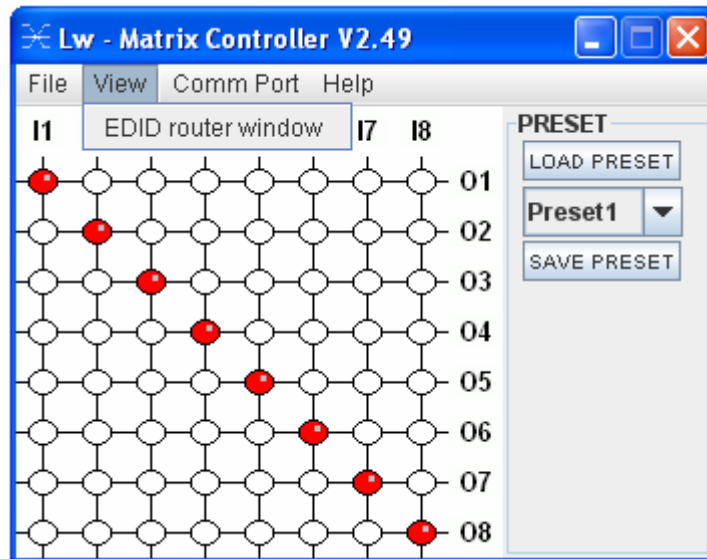
Info

Only one user is allowed to connect to one matrix switcher via ethernet.

Info

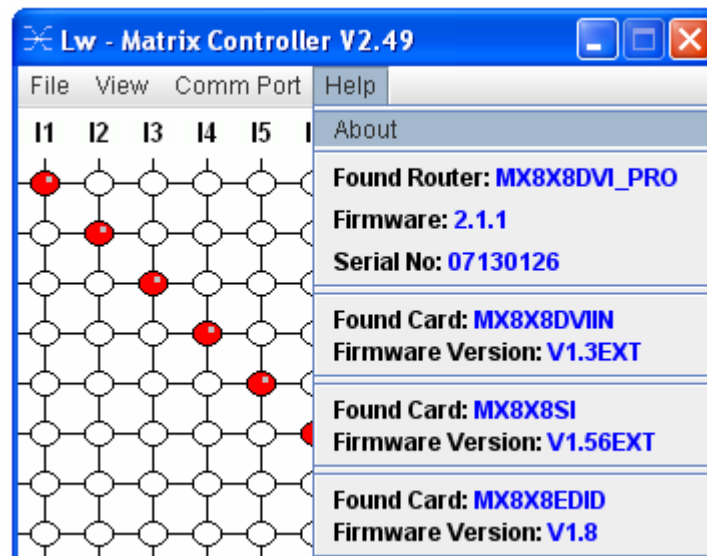
After a successful connection has been established to a matrix switcher there is no difference in control via serial port and ethernet.

4. After the MATRIX CONTROLLER found the hardware a button matrix should appear. Select View->EDID router window.

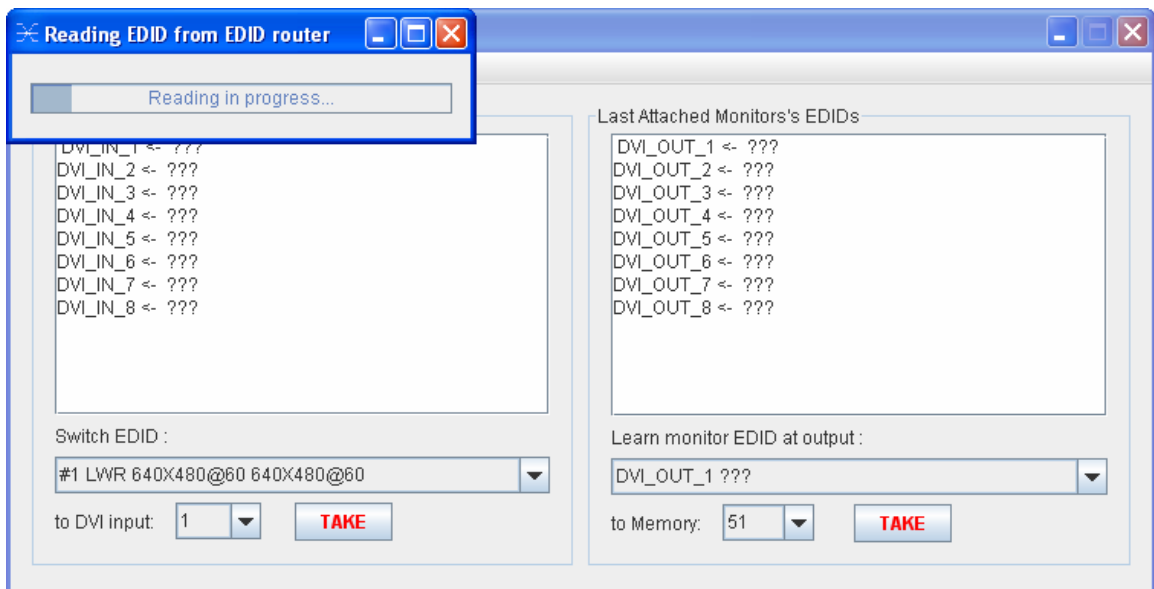


Info

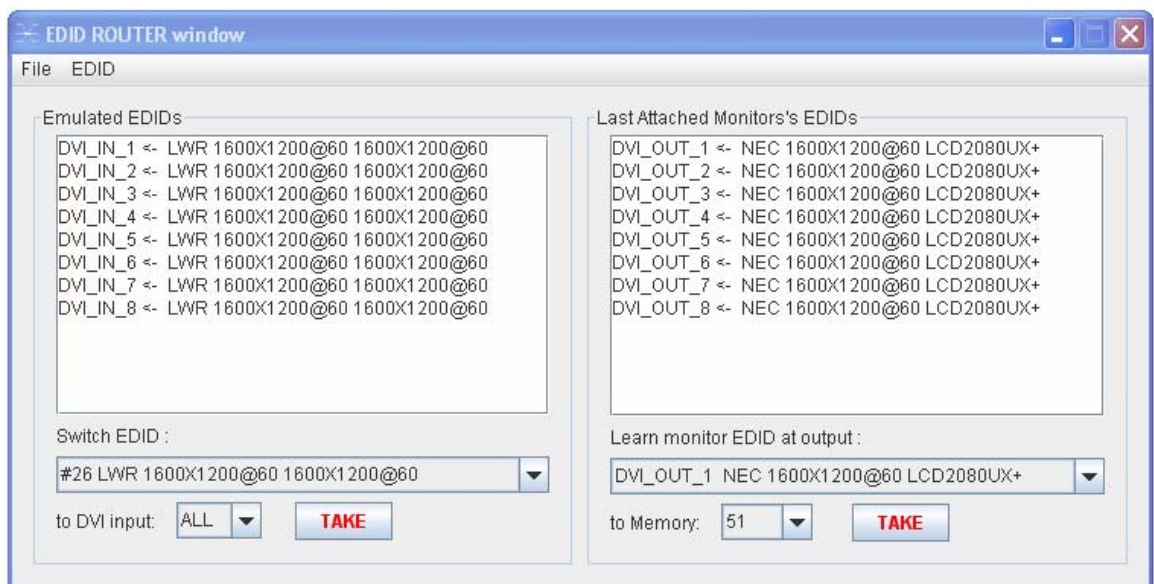
After a successful connection all identifying information is shown under the Help menu.



- The EDID ROUTER window appears and the software starts to synchronize EDID list with the Matrix switcher.

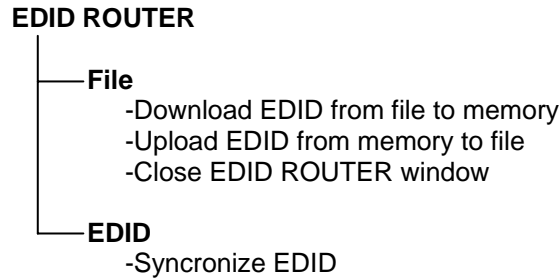


- After synchronization process the current status of the MATRIX SWITCHER EDID are shown on the two text area. The Emulated EDID window contains the resolutions and the vendor names of the EDID reported to the PC for each input separately. The Last Attached Monitor's EDID window contains the resolutions and vendor names of the display devices connected to matrix switcher's output.



EDID ROUTER MENU Description

EDID Router window contains following menus and submenus:



EDID menu

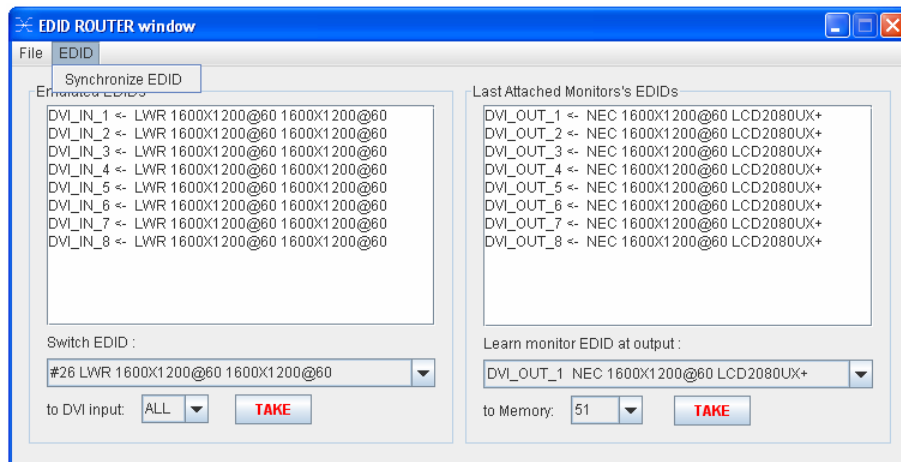
EDID menu contains 1 section:

Synchronize EDID

Selecting Synchronize EDID menu the Lightware Matrix Controller (PC) software rereads all EDID information from the connected MATRIX SWITCHER. While normal operation it is not necessary to use this menu item because the MATRIX SWITCHER always automatically reports every status change.

Info There is always a small delay in responses. So if a new monitor is connected to the output its new EDID is not shown immediately but in 2 seconds!

Info As the MATRIX SWITCHER reports status change nothing will happen if you select the same EDID to a given input or connect the same display device to a given output!

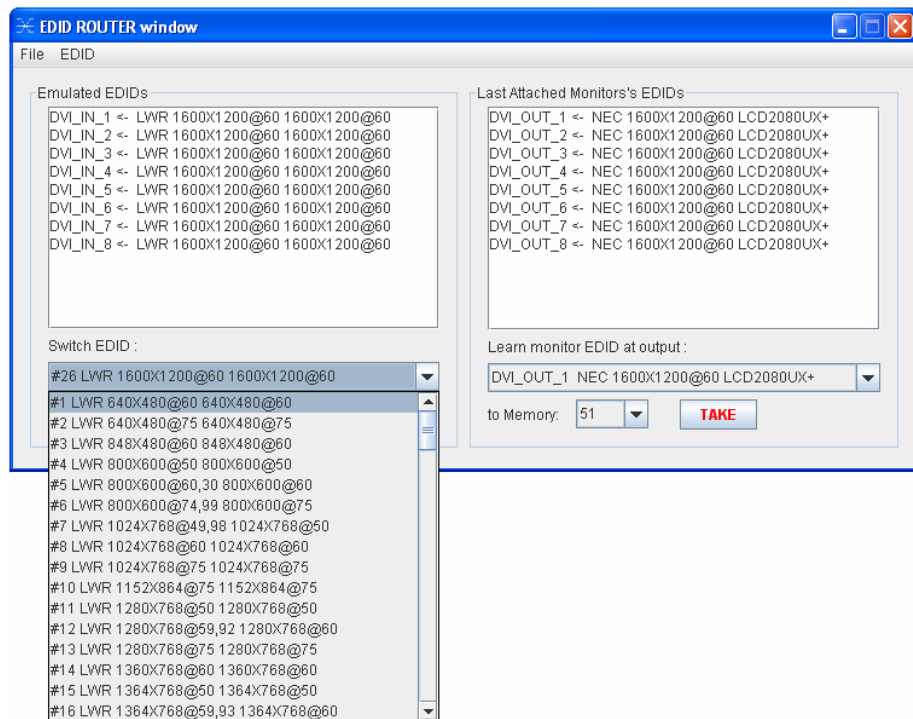


Change emulated EDID at one or all inputs

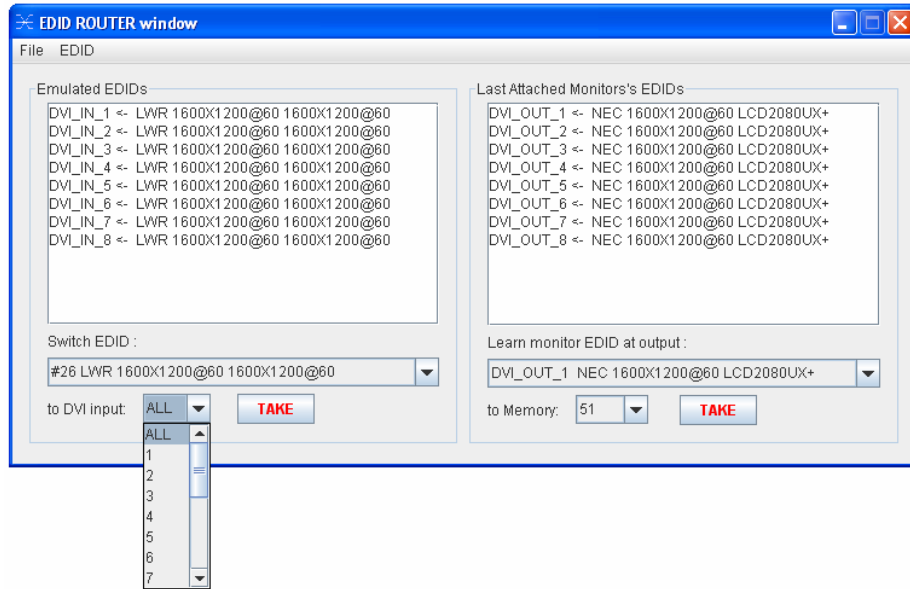
All EDID are enumerated in the switch EDID list. If you want to modify the current emulated resolution you can select one from this list. There is static EDID emulation or dynamic EDID emulation.

- Static EDID emulation means, when an EDID from memories 01..100 is selected and emulated at input(s)
- Dynamic EDID emulation occurs, when an attached monitor's EDID is emulated at input(s), simply copying the data from the monitor. This EDID changes automatically, if a new monitor is attached to the output.

1. Select the desired EDID from Switch EDID list (from #1..100 through DVI_IN_1 ..to DVI_IN_8)



2. Select the input (or ALL inputs) where the desired EDID will be emulated
3. Press TAKE button. Now the EDID has been changed on selected input(s). After selecting a new EDID from the *switch EDID* list, selecting an input (or the *ALL* item) and pressing the *TAKE* button the MATRIX SWITCHER will modify that (or all) input(s) EDID. This procedure causes a status change and hence it is reported back to the CONTROL SOFTWARE within 2 seconds.



Info If a monitor's EDID was selected to emulate (DVI_OUT_1 to ..8) the emulated EDID will be changed all times on that input(s), when a new monitor was connected. If the monitor was disconnected from output, the latest EDID remains, it will not be deleted from input. This feature helps especially rental technicians or system integrators to keep the source continuously transmitting the signal, and adopt the system for new incoming display devices.

Info Power ON/OFF cycle will not effect the emulated EDID or other settings.

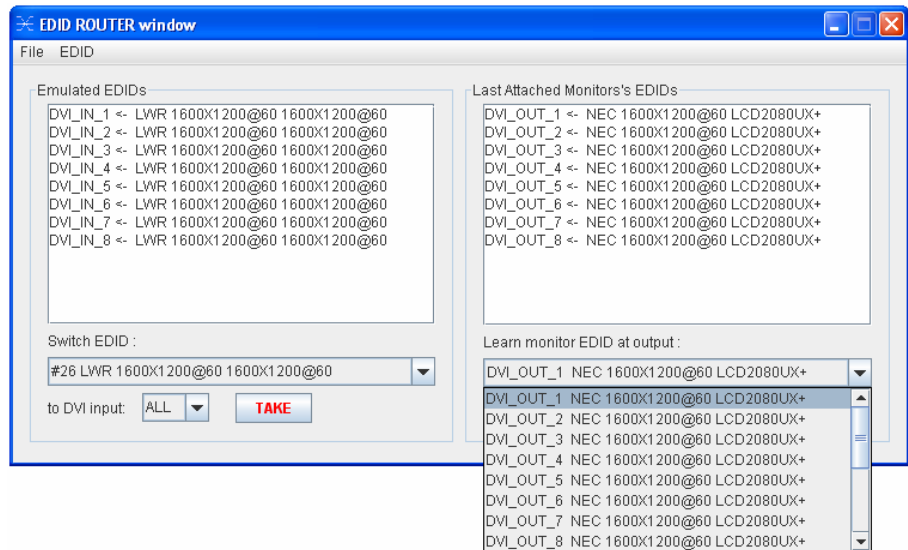
Info EDID switch procedure causes a status change and hence it is reported back to the CONTROL SOFTWARE within 2 seconds.

Learn EDID from attached display device

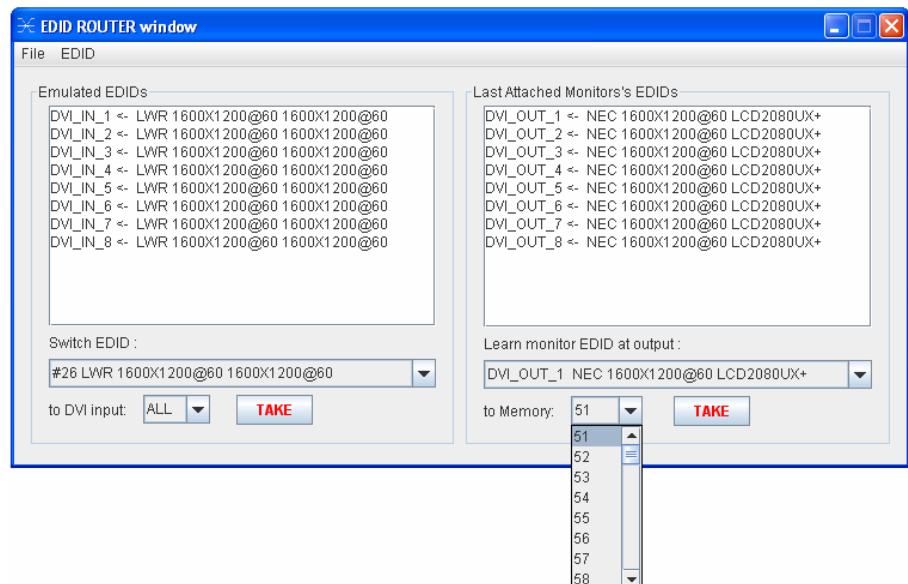
The MATRIX SWITCHER can learn the EDID from the connected display device and store it in one of user programmable memory.

All EDID is enumerated in the „Learn monitor EDID at output” list according to the router's outputs.

1. Select the desired display's EDID from the list.



2. Choose a memory location from the *to Memory* list where the EDID will be stored. Only memories 50...100 are available for user.

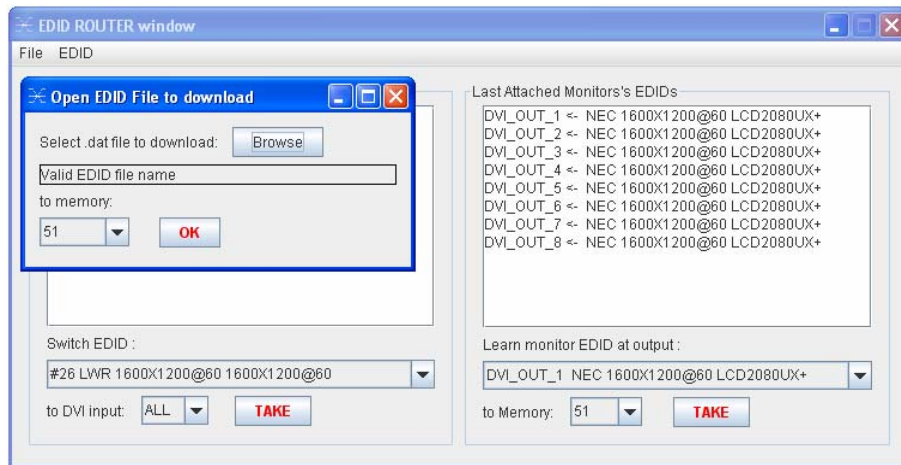


3. Press TAKE button. Now the EDID is stored in Matrix non volatile memory. This procedure causes a status change and hence it is reported back to the MATRIX CONTROL SOFTWARE within 2 seconds

Download EDID from file to memory

The MATRIX SWITCHER is able to learn and store EDID from attached PC computer. EDID is stored in *.dat files.

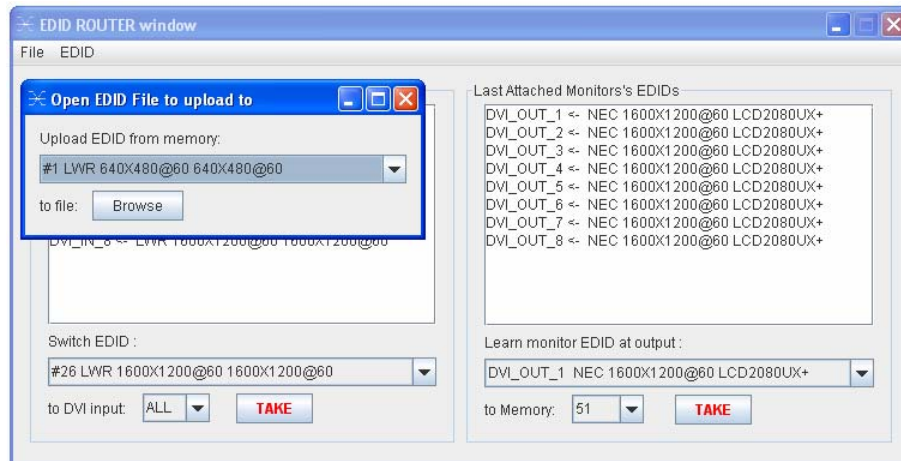
1. Select File-> *Download EDID from file to memory*.
2. In the pop-up window browse your hard drive to find EDID file. The software checks if the selected file is a valid EDID file, than continue with step 3.
3. Select a memory location to store the selected EDID. Press 'OK' button. After it was accomplished "Download Ready" message appears.



Upload EDID from memory to file

The CONTROL SOFTWARE can upload EDID from the MATRIX SWITCHER, and save it as an EDID file.

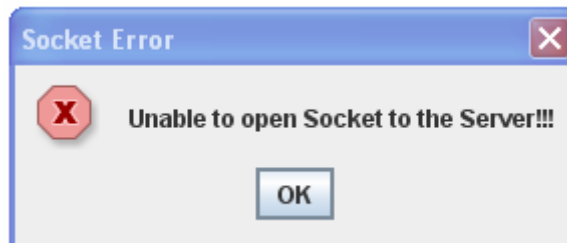
1. Select File-> *Upload EDID from memory to file*.
2. From the pop-up window choose the EDID memory you want to save to file.
3. Click Browse, add a file name and path and click Save. If upload was successful, an "Upload Ready " message confirms the command.



4.4 ERROR Messages

During remote operation there may happen some trouble with the communication. This cases the Matrix Controller software displays error messages on the screen. Below there are listed the error messages.

Unable to open Socket to the Server!!!



Trigger: More than one user tries to access the router via LAN.
Explanation: Only one user can connect to the router at once.

COM port error!!!



Trigger: The Matrix Controller software was unable to open the selected serial communication port on the PC.
Solution: Close any other application that uses the selected port, or try to use an other serial port. Do not forget to connect the serial lead to the right connector.

Unable to communicate with the MATRIX



Trigger: No router was found on the specified port, or a command-response timeout has occurred.
Explanation: The Matrix Controller has tried to access a router on the specified comm port but no response was received within 2 secs.
Solution: Select the right serial port the router is connected to, or try to do the last action again.

5. Firmware upgrade

The unit can be upgraded with new firmware versions via RS232 port using a PC computer or Laptop. Please contact Lightware for the latest firmware version at sales@lightware.hu

The firmware upgrade can be done in two ways: Front Panel Enabled Upgrade or Jumper Enabled Upgrade.

Front Panel Enabled Upgrade is the simplest mode for firmware upgrade.

Jumper Enabled Upgrade is only needed, when the unit does not have a software installed or the Front Panel Enabled Upgrade failed from any reason.

Before upgrading the new firmware, run the " LW_matrix_bundle.exe " which installs the current " Lightware_matrix_controller.jar" and " LW_bootloader_v10.jar " softwares, which are available from STARTmenu/Lightware location.

The new firmware is a .hex file. The name of the file contains the router type and the firmware version, ex.: MX8x8DVI_v17.hex

FRONT PANEL ENABLED UPGRADE

Front Panel Enabled Upgrade is the simplest mode for software upgrade. For preventing unwanted software modifications via RS232 commands, the user must enable the router using front panel buttons to go in bootloader state. Follow the steps described below.

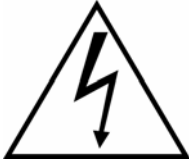
1. Connect the RS232 port of the router to the PC RS232 port via null modem cable.
2. **Switch ON** the router connecting to the AC power
3. Check if the router is in LW protocol mode: switch the unit in TAKE mode then lock the panel by pressing CONTROL LOCK. Now the CONTROL LOCK lights red. Press the OUTPUT LOCK button. During pressed, the SOURCE1 or SOURCE2 button lights up according to the selected protocol. If SOURCE1 button lights, LW protocol is selected, firmware upgrade is possible.
4. Launch "LW_bootloader_v10.jar" program from START/Programs/Lightware on your computer
5. Select the desired COM PORT using **Com Port** menu
6. Open the new firmware file (file name: MX8x8DVI_v17.hex) using **File-Open menu** from its current location
7. Click **DOWNLOAD** using **Firmware menu**. Now the computer requests the router to confirm the firmware upgrade. User must enable the firmware upgrade pressing front panel buttons as requested on the screen or described below:
8. **Enable Firmware Upgrade:** Switch the unit in **TAKE** mode, then press and release **CONTROL LOCK** button. Now Control lock button lights red. Press and release source buttons **1** then **2** then **3** then **4** after each other. Now the TAKE, LOAD and SAVE buttons start blinking indicating, that the router is in bootloader mode. This state will remain until powering down the unit.
9. Start the download process by pressing OK button on the computer. The download status appears on processbar. Never disconnect the RS232 cable during firmware upgrade! When download completes, READY message appears in red colour.

10. Disconnect the router from AC power, than power it up again. After powering the unit up, all buttons will light up for a while indicating, that the unit is ready for operation. In case of failure repeat steps 7 to 10.

Info

Once the firmware upgrade failed, the router will NOT indicate it's bootloader enabled state with TAKE LOAD SAVE buttons blinking, because previous software has been deleted, but steps 1 to 10 can still be repeated.

JUMPER ENABLED UPGRADE



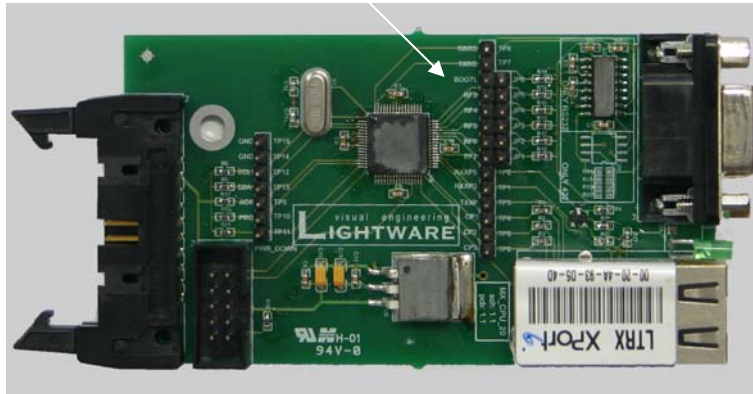
To prevent shock, never operate the unit with open cabinet. There are high voltage components inside.

Never plug the power cord when the cabinet is open.

Always unplug the power cord before opening the cabinet.

1. Disconnect the unit from AC power
2. Remove the top cover by loosening 12 screws
3. Insert a Jumper on BOOTL- JP6 position

BOOTL and J6 Jumpers location



CPU card jumper locations

4. Reassemble the top cover with 2 screws - temporary for safety
5. Connect the RS232 cable between the router and the PC.
6. **Power ON** the router connecting to the AC power. Now the router starts up in bootloader mode, no normal operation is possible.
7. Launch "LW_bootloader_v10.jar" program from START/Programs/Lightware on your computer
8. Select the desired COM PORT using **Com Port** menu
9. Open the new firmware file (file name example: MX8x8DVI_v17.hex) using **File-Open** menu from its current location
10. Click **DOWNLOAD** using **Firmware** menu. The download status appears on the progress bar. Never disconnect the RS232 cable during firmware upgrade! When download completes, **READY** message appears in red color. This means, the firmware upgrade was successful.
11. Disconnect the router from AC power and remove the jumper.
12. Assemble the top cover, then power the unit up again. After powering the unit up, all buttons will light up for 4 seconds, indicating that the unit is ready for operation. In case of failure repeat the process.

Info

With J1 inserted, the router will always start up in bootloader mode. The unit will not work properly while J1 is inserted.

6. Specifications

Inputs

DVI input signals8x DVI single link
 Connectors24 pole DVI-D digital only
 Auto equalization:Yes, max 40dB at 825 MHz
 Input cable equalization:50 meter 24AWG cable at 1.65 Gbps
 EDIDYes for each input connector

Signal

Data rate:all between 25 Mbps and 1.65 Gbps /colour
 Channels:1x TMDS Clock + 3x TMDS Colours
 Resolutions:all between 640x480 and 1920x1200@60Hz
 Colour depth:24 bits, 8 bit/colour
 HDTV resolutions:720p, 1080i, 1080p
 HDCP compliant:No

Resolution	Vertical frequency (Hz)	Horizontal frequency (KHz)	Pixel Clock frequency (MHz)	Comment
640x480	60.00	31.47	25.18	DOS VGA
800x600	60.32	37.88	40	VESA SVGA
800x600	75.00	46.87	49.5	VESA SVGA
832x624	74.55	49.72	57.29	MACINTOSH
1280x720	60.00	45.00	74,25	HDTV 720p
1024x768	60.00	48.36	65	VESA XGA
1024x768	75.00	60.02	78.75	VESA XGA
1360x768	47.7	60.00		WIDE-XGA
1152x870	75.06	68.68	100	MACINTOSH
1280x1024	75.00	80.00	135.00	VESA SXGA
1400x1050	60.00	65.64	121.82	SXGA+
1920x1080	60.00	67.50	148.5	HDTV 1080p
2048x1080	60.00	67.50	157.3	2K
1600x1200	60.00	75.00	162	VESA UXGA
1920x1200	60.00	75.00	162	VESA

Table5. DVI timing examples for some typical supported resolutions

Outputs

DVI output signals8x DVI single link
 Connectors24 pole DVI-D digital only
 Output preemphasisNo
 +5V output current500mA continuous each

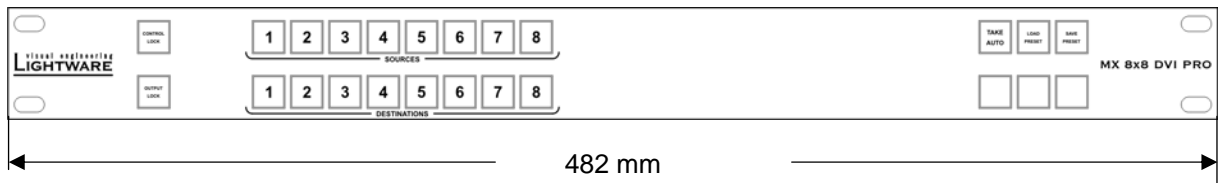
Control

Front Panel buttonsYES, 21 buttons
Serial Port9pole Dsub Female RS232 or RS422
Baud rate9600 Baud, 8 bit, 1stop bit, no parity
Ethernet port:RJ 45 female connector
Ethernet protocolTCP/IP, UDP/IP, ARP, ICMP, SNMP, TFTP, Telnet, DHCP,
BOOTP, HTTP, and AutoIP

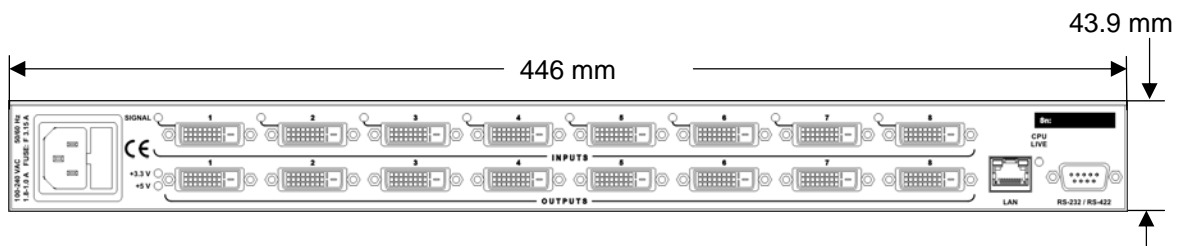
General

Power 100-240 V AC 50/60 Hz 1.8..1.0 A
ComplianceCE
EMI/EMCEN 55103-1, EN 55103-2
SafetyEN 60065 Class I
Rack mountYes, 1U high
Enclosure Metal
Enclosure dimensions44 mm H x 446 mm W x 302 mm D
Weight3kg
Warranty 3 years

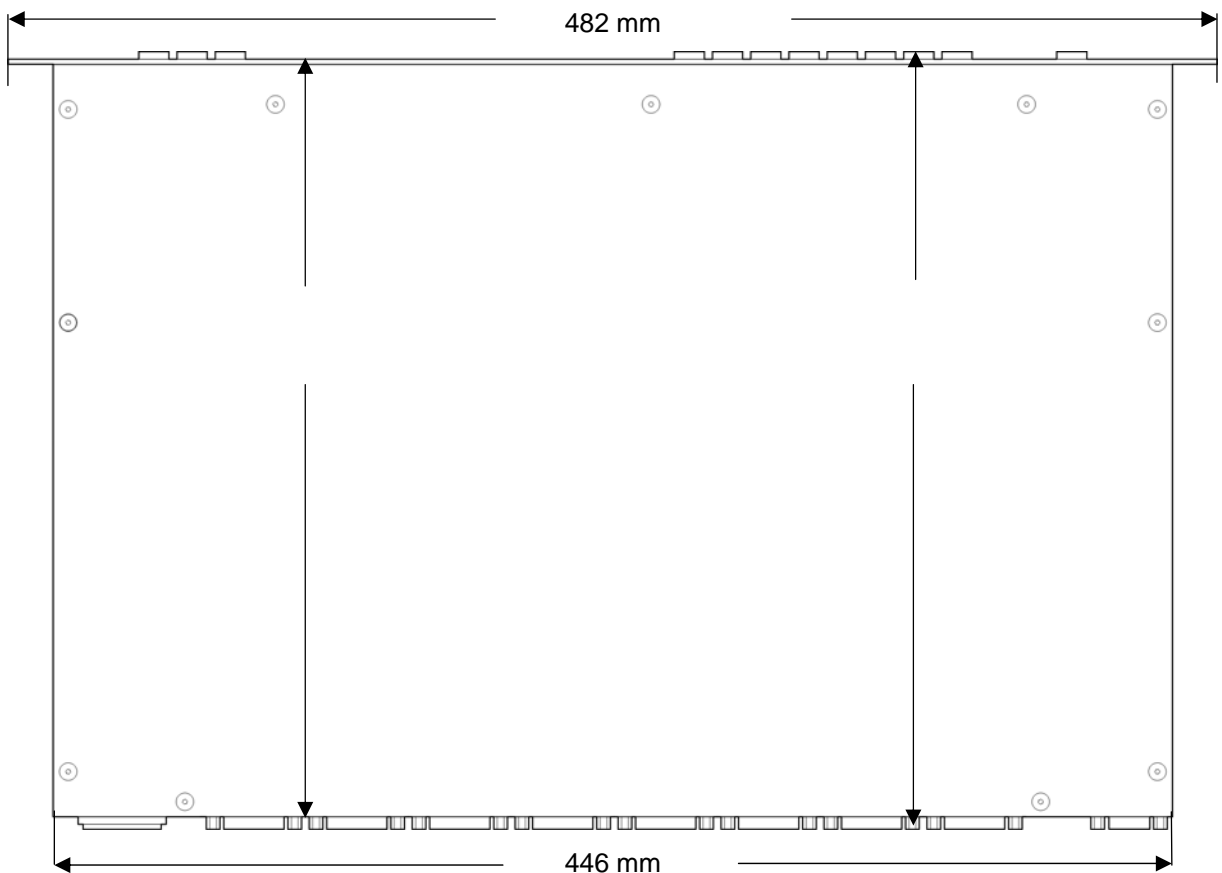
Mechanical Drawings



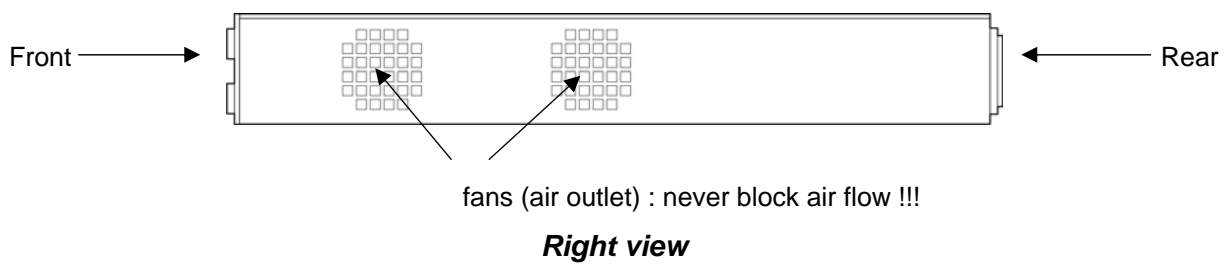
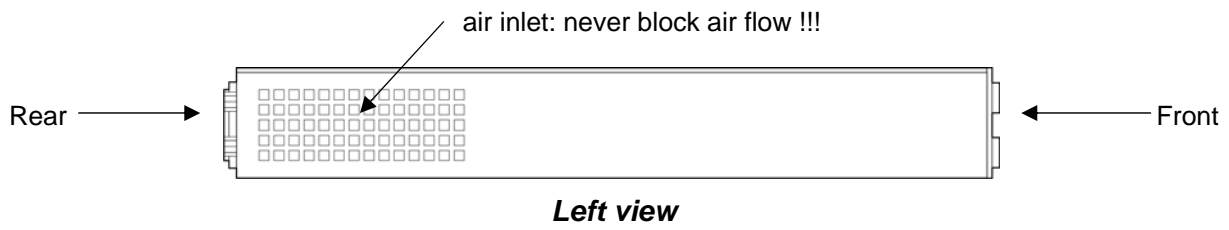
Front view



Rear view



Top view



7. Quality Check Record

Model name	Serial number	Date of manufacture	Checked

1. Hardware

Card	HW	BIOS
8INDV		
8OUDV		
CPU		
EDID Router		
IP ADDR		

Card	HW	BIOS
Control P		
PSU		
CD ROM		
LAN		
SUBNET		

2. Electrical check

GND/EARTH	<input type="checkbox"/>	Inputs	<input type="checkbox"/>
+3.3V & +5V	<input type="checkbox"/>	Input LED's	<input type="checkbox"/>
CPU Live	<input type="checkbox"/>	Outputs	<input type="checkbox"/>
Fan1 & Fan2	<input type="checkbox"/>	RS-232	<input type="checkbox"/>
Buttons	<input type="checkbox"/>	LAN	<input type="checkbox"/>

8. Warranty

Lightware Visual Engineering warrants this product against defects in materials and workmanship for a period of three years from the date of purchase.

The customer shall pay shipping charges when unit is returned for repair. Lightware will cover shipping charges for return shipments to customers.

In case of defect please call your local representative, or Lightware at

Lightware Visual Engineering
1071 Budapest Peterdy str. 15, HUNGARY

Tel.: +36 1 889 6177

Fax.: +36 1 342 9903

E-mail: support@lightware.hu